

HM

Henry Margu



Henry Margu circa 1951 as he was making preparations to establish the company.



Trend-setting styles, cutting-edge colorations, incomparable quality and relentless dedication to our customers has secured Henry Margu's position as a leader of the "alternative" hair industry.

Since Henry Margu first came on the scene in Philadelphia in 1951, family ownership developed the company into one of the most well respected international brands of wigs and hair fashions. From a humble beginning in the store front millinery shop of the family house, the perseverance and dedication of the Margu family has made us the oldest and most experienced wig manufacturer in the U.S.

The design staff at Henry Margu has focused on developing exquisite fashions while achieving the highest quality standards for our products. While Henry Margu continues to grow, our core values and strong family culture have not changed.

We strive to be the best in every detail, produce the finest quality, provide the most exceptional service, while never losing sight of our goals! Still family owned since 1951, HM continues to carve its path in the industry based upon the same principles with which the company was established decades ago. Most importantly, the driving focus of our efforts is for one purpose... the satisfaction of our customers.

Henry Margu... The difference is beautiful!™



HM

Naturally Yours®

...innovative and artistically hand crafted styles offering exceptional comfort while looking amazingly realistic. Modern in design, the *Naturally Yours* collection offers ready-to-wear styles with monofilament tops and lace fronts that offer the versatility to be customized to fit a woman's personal needs. With advancements in production techniques, the monofilament top is hand-knotted with individual fibers to simulate realistic hair growth and allows for multi-directional styling.

Browse the following pages to see the variety of luxurious *Naturally Yours* styles that will help every woman to radiate beauty and appeal!

For the most natural appearance and the ultimate in comfort, it's *Naturally Yours*.®

BRIE, page 4

MORGAN, cover, page 5



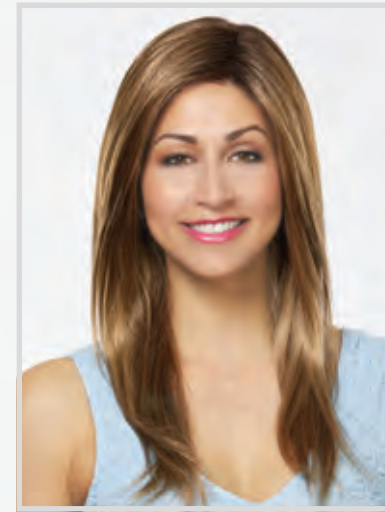
Brie

WEIGHT: 1.80 oz.
BANG: 3½"
TOP: 2 - 4"
SIDES: 2½ - 3½"
BACK: 2½ - 3½"
REF#: 4526
COLOR SHOWN: 88H
COLORS: 1BH, 4H, 5H, 6H, 7H, 8H, 8/14H, 8/27/33H, 10/613, 12AH, 12H, 14H, 16H, 24H18, 25H, 26H, 27AH, 31H, 37, 38, 43, 44, 51, 56, 60, 88H
GR COLORS: 10/613GR, 2418GR, 25GR, 26GR, 38/56GR, 60/101GR

*Petite Average headsize
 Monofilament top with lace front and hand knotted back*



Morgan



WEIGHT: 4.95 oz.
BANG: 10"
TOP: 10 - 16½"
SIDES: 16½"
BACK: 16½"
OVERALL: 21"
REF#: 4528
COLOR SHOWN: 2418GR
COLORS: 1BH, 4H, 5H, 6H, 7H, 8H, 8/14H, 8/27/33H, 10/613, 12H, 14H, 16H, 24H18, 26H, 27AH, 33H, 44, 51, 60
GR COLORS: 10/613GR, 2418GR, 25GR, 26GR, 60/101GR, 88GR, 131GR, 614GR

Monofilament top with lace front and hand knotted back



Devon

WEIGHT: 3.10 oz.
BANG: 5½"
TOP: 5½ - 9½"
SIDES: 7"
BACK: 3¼ - 9½"
OVERALL: 13"
REF#: 4530
COLOR SHOWN: 26GR
COLORS: 1BH, 4H, 5H, 6H, 7H, 8H, 8/14H, 8/27/33H, 12H, 14H, 16H, 27AH, 31H, 37, 38, 44, 51, 56, 60, 88H, 130H, 614H
GR COLORS: 10/613GR, 2418GR, 26GR

Monofilament top with lace front and hand knotted back



Skylar

WEIGHT: 1.70 oz.

BANG: 2½"

TOP: 2¼ - 3¾"

SIDES: 2¼ - 3¼"

BACK: 1¾ - 3¾"

REF#: 4519

COLOR SHOWN: 8/27/33H

COLORS: 1BH, 4H, 5H, 6H, 7H, 8H, 8/14H, 8/27/33H, 12H, 14H, 16H, 24H18, 26H, 27AH, 31H, 33H, 37, 38, 43, 44, 51, 56, 60, 88H

Petite Average headsize

Monofilament top with lace front and partially hand knotted back area



Chic

WEIGHT: 3.30 oz.

BANG: 8½"

TOP: 8½"

SIDES: 6½ - 7½"

BACK: 3 - 7½"

OVERALL: 10"

REF#: 4522

COLOR SHOWN: 8/27/33H

COLORS: 1BH, 4H, 5H, 6H, 7H, 8H, 8/14H, 8/27/33H, 12H, 14H, 16H, 24H18, 26H, 31H, 37, 38, 43, 56, 60

GR COLORS: 26GR, 88GR

100% hand knotted stretch cap with monofilament top and lace front



Renee

WEIGHT: 1.90 oz.

BANG: 4"

TOP: 2½ - 5"

SIDES: 2½ - 3½"

BACK: 2½ - 3½"

REF#: 4527

COLOR SHOWN: 26H

COLORS: 4H, 5H, 6H, 7H, 8H, 8/14H, 8/27/33H, 10/613, 12H, 14H, 16H, 24H18, 25H, 26H, 27AH, 31H, 37, 38, 43, 44, 51, 56, 60, 88H

GR COLORS: 10/613GR, 2418GR, 25GR, 26GR, 38/56GR, 60/101GR

Monofilament top with lace front and hand knotted back area





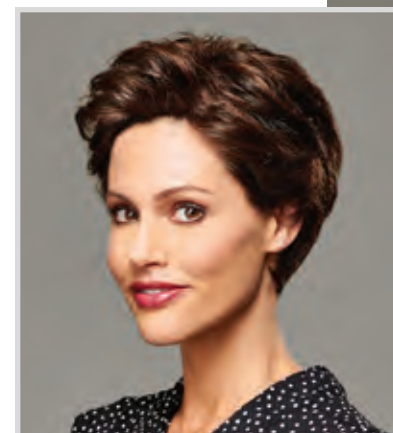
Lori

WEIGHT: 1.65 oz.
BANG: 2½"
TOP: 2½ - 3"
SIDES: 2¼ - 2¾"
BACK: 2¼ - 2¾"
REF#: 4514
COLOR SHOWN: 33H
COLORS: 4H, 5H, 7H, 8H, 8/14H, 12H, 14H, 16H, 24H18, 26H, 31H, 33H, 37, 38, 43, 44, 51, 56, 60
Petite Average headsize
Monofilament top with lace front and partially hand knotted back area



Irish

WEIGHT: 1.75 oz.
BANG: 3"
TOP: 2½ - 3"
SIDES: 2½ - 3"
BACK: 2½ - 3"
REF#: 4513
COLOR SHOWN: 5H
COLORS: 4H, 5H, 6H, 7H, 8H, 8/14H, 8/27/33H, 12H, 14H, 24H18, 26H, 31H, 37, 38, 43, 44, 51, 56, 60, 88H
Petite Average headsize
Monofilament top with lace front and partially hand knotted back area



Nora

WEIGHT: 3.15 oz.
BANG: 10 - 10¼"
TOP: 6½ - 9¼"
SIDES: 6½ - 8¼"
BACK: 8 - 8¼"
OVERALL: 11¾"
REF#: 4515
COLOR SHOWN: 8/27/33H
COLORS: 1BH, 4H, 5H, 6H, 7H, 8H, 8/14H, 8/27/33H, 12H, 14H, 16H, 24H18, 26H, 27AH, 31H, 33H, 37, 38, 43, 44, 56, 60, 130H, 626H
100% hand knotted stretch cap with monofilament top and lace front



Violet

WEIGHT: 6.15 oz.
BANG: 13 - 15"
TOP: 15 - 17"
SIDES: 15 - 17"
BACK: 15 - 17"
OVERALL: 24"
REF#: 4516
COLOR SHOWN: 8H
COLORS: 1BH, 4H, 5H, 6H, 7H, 8H, 8/14H, 8/27/33H, 12H, 14H, 16H, 24H18, 26H, 27AH, 33H, 88H, 614H, 626H
100% hand knotted stretch cap with monofilament top and lace front



Kelly

WEIGHT: 2.20 oz.
BANG: 4"
TOP: 3 - 8"
SIDES: 4 - 6½"
BACK: 1½ - 6½"
OVERALL: 8"
REF#: 4745
COLOR SHOWN: 60/101GR
COLORS: 1BH, 4H, 5H, 6H, 7H, 8H, 8/14H, 8/27/33H, 10/613, 12AH, 12H, 14H, 16H, 24H18, 25H, 26H, 27AH, 31H, 33H, 37, 38H, 43, 44H, 51H, 56, 60H, 88H, 130H, 614H, 626H
GR COLORS: 4GR, 10/613GR, 2418GR, 25GR, 26GR, 38/56GR, 60/101GR, 614GR

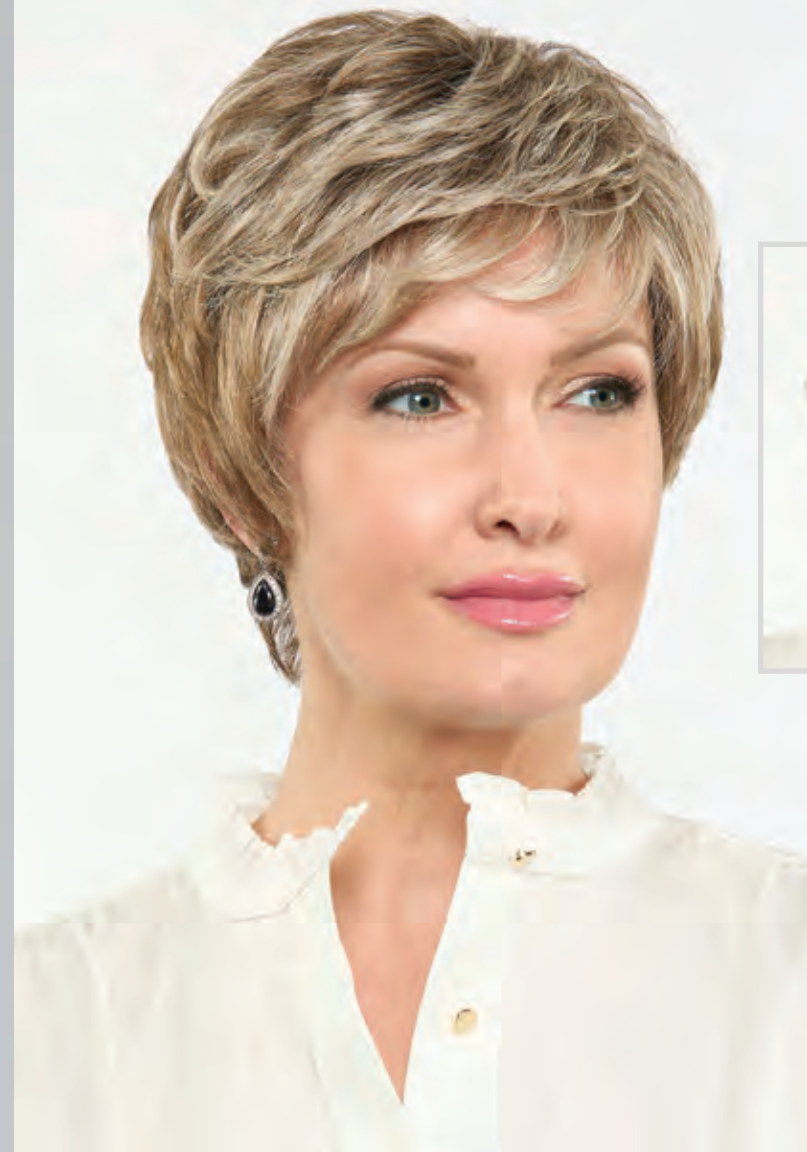
*Petite Average headsize
Monofilament top*



Grace

WEIGHT: 1.75 oz.
BANG: 2 - 3"
TOP: 2 - 3"
SIDES: 2¼ - 2½"
BACK: 2¼ - 2½"
REF#: 4753
COLOR SHOWN: 37
COLORS: 1BH, 4H, 5H, 6H, 7H, 8H, 8/14H, 8/27/33H, 12AH, 12H, 14H, 16H, 24H18, 25H, 26H, 33H, 37, 38H, 43, 44H, 51H, 56, 60H, 88H
GR COLORS: 38/56GR, 60/101GR

*Petite Average headsize
Monofilament top
with lace front*



Kendall

WEIGHT: 3.55 oz.
BANG: 7"
TOP: 7 - 11"
SIDES: 8 - 10"
BACK: 8 - 10"
OVERALL: 14½"
REF#: 4758
COLOR SHOWN: 7H
COLORS: 1BH, 4H, 5H, 6H, 7H, 8H, 8/14H, 8/27/33H, 10/613, 12AH, 12H, 14H, 16H, 24H18, 25H, 26H, 27AH, 31H, 33H, 88H, 130H, 614H, 626H
GR COLORS: 4GR, 8/27/26GR, 10/613GR, 2418GR, 25GR, 26GR, 88GR, 131GR, 614GR

*Monofilament top
with lace front*





Michele



WEIGHT: 2.05 oz.
BANG: 4"
TOP: 3 - 5½"
SIDES: 3 - 4½"
BACK: 3 - 4½"
REF#: 4778
COLOR SHOWN: 10/613GR
COLORS: 1BH, 4H, 5H, 6H, 7H, 8H, 8/14H, 8/27/33H, 10/613, 12AH, 12H, 14H, 16H, 24H18, 25H, 26H, 27AH, 31H, 33H, 37, 43, 51H, 56, 60H, 88H, 130H
GR COLORS: 8/27/26GR, 10/613GR, 2418GR, 25GR, 26GR, 38/56GR, 60/101GR, 88GR, 614GR

Monofilament top with lace front



Athena

WEIGHT: 3.75 oz.
BANG: 6"
TOP: 6 - 12½"
SIDES: 7 - 13"
BACK: 9 - 13"
OVERALL: 15"
REF#: 4754
COLOR SHOWN: 60/101GR
COLORS: 1BH, 4H, 5H, 6H, 7H, 8H, 8/14H, 8/27/33H, 10/613, 12AH, 12H, 14H, 16H, 24H18, 25H, 26H, 27AH, 31H, 33H, 38, 44, 51, 56, 60, 88H, 130H, 614H, 626H
GR COLORS: 4GR, 10/613GR, 2418GR, 25GR, 26GR, 38/56GR, 60/101GR, 88GR, 131GR, 614GR

Monofilament top with lace front

Iris

WEIGHT: 2.10 oz.
BANG: 3½"
TOP: 2½ - 4½"
SIDES: 2½ - 4"
BACK: 2½ - 4"
REF#: 4780
COLOR SHOWN: 60/101GR
COLORS: 4H, 5H, 6H, 7H, 8H, 8/14H, 8/27/33H, 10/613, 12H, 14H, 16H, 24H18, 25H, 26H, 27AH, 31H, 33H, 37, 38, 43, 44, 51, 56, 60, 88H
GR COLORS: 10/613GR, 2418GR, 25GR, 26GR, 38/56GR, 60/101GR



Monofilament top with lace front



Taylor

WEIGHT: 3.95 oz.
BANG: 6"
TOP: 4½ - 10"
SIDES: 6 - 8¾"
BACK: 8¾ - 10¾"
OVERALL: 15½"
REF#: 4772
COLOR SHOWN: 88GR
COLORS: 1BH, 4H, 5H, 6H, 7H, 8H, 8/14H, 8/27/33H, 12H, 14H, 16H, 24H18, 26H, 27AH, 626H
GR COLORS: 2418GR, 26GR, 88GR, 131GR, 614GR

Monofilament top with lace front



Sabrina

WEIGHT: 1.80 oz.
BANG: 3½"
TOP: 2¾ - 4¾"
SIDES: 2½ - 4"
BACK: 2½ - 4"
REF#: 4731
COLOR SHOWN: 6H
COLORS: 4H, 5H, 6H, 7H, 8H, 8/14H, 8/27/33H, 12H, 14H, 16H, 24H18, 26H, 27AH, 31H, 37, 38H, 43, 44H, 51H, 56, 60H, 130H
GR COLORS: 38/56GR, 60/101GR

*Petite headsize
 Monofilament top*



Charlotte

WEIGHT: 1.95 oz.
BANG: 3½"
TOP: 2½ - 4"
SIDES: 2¼ - 3"
BACK: 2¼ - 3"
REF#: 4750
COLOR SHOWN: 4H
COLORS: 1BH, 4H, 5H, 6H, 7H, 8H, 8/14H, 8/27/33H, 12H, 14H, 24H18, 25H, 26H, 33H, 37, 38, 43, 44, 51, 56, 60, 88H, 130H
GR COLORS: 38/56GR, 60/101GR

*Monofilament top
 with lace front*

Monica

WEIGHT: 1.80 oz.
BANG: 2¾"
TOP: 2 - 3¼"
SIDES: 2¼ - 2¾"
BACK: 1¾ - 2¾"
REF#: 4751
COLOR SHOWN: 12H
COLORS: 1BH, 4H, 5H, 6H, 7H, 8H, 8/14H, 8/27/33H, 12H, 14H, 16H, 24H18, 26H, 27AH, 37, 38, 43, 44, 51, 56, 60
GR COLORS: 38/56GR, 60/101GR, 131GR

*Petite Average headsize
 Monofilament top
 with lace front*



Becky

WEIGHT: 1.80 oz.
BANG: 4"
TOP: 2 - 3½"
SIDES: 1¾ - 2¾"
BACK: 1¾ - 3¼"
REF#: 4739
COLOR SHOWN: 88H
COLORS: 4H, 5H, 6H, 7H, 8H, 8/14H, 8/27/33H, 12H, 14H, 16H, 24H18, 26H, 27AH, 31H, 33H, 37, 38H, 43, 44H, 51H, 56, 60H, 88H
GR COLORS: 38/56GR, 60/101GR

Monofilament top

Stella

WEIGHT: 2.05 oz.
BANG: 4"
TOP: 4"
SIDES: 2½ - 3½"
BACK: 2½ - 3½"
REF#: 4800
COLOR SHOWN: 12H
COLORS: 4H, 6H, 7H, 8H, 8/14H, 8/27/33H, 12H, 14H, 16H, 24H18, 26H, 33H, 37, 38, 43, 51, 56, 60, 88H
GR COLORS: 2418GR, 26GR, 88GR

Monofilament top



Gianna

WEIGHT: 2.40 oz.
BANG: 4"
TOP: 3½ - 5½"
SIDES: 4 - 4½"
BACK: 4½ - 5"
OVERALL: 10"
REF#: 4766
COLOR SHOWN: 14H
COLORS: 4H, 5H, 6H, 7H, 8H, 8/14H, 8/27/33H, 12AH, 12H, 14H, 16H, 24H18, 26H, 27AH, 31H, 33H, 37, 38, 43, 44, 51, 56, 60, 88H, 130H
GR COLORS: 4GR, 2418GR, 26GR

*Monofilament top
 with lace front*



Peyton

WEIGHT: 3.00 oz.
BANG: 7"
TOP: 5 - 8½"
SIDES: 4 - 7"
BACK: 4 - 7"
OVERALL: 10½"
REF#: 4761
COLOR SHOWN: 31H
COLORS: 1BH, 4H, 5H, 6H, 7H, 8H, 8/14H, 8/27/33H, 10/613, 12H, 14H, 16H, 24H18, 25H, 26H, 31H, 33H, 88H, 130H, 626H
GR COLORS: 4GR, 10/613GR, 2418GR, 25GR, 26GR, 88GR

Monofilament top with lace front

Hayden

WEIGHT: 3.50 oz.
BANG: 7"
TOP: 5 - 10"
SIDES: 6 - 9"
BACK: 4 - 9"
OVERALL: 11½"
REF#: 4763
COLOR SHOWN: 8/14H
COLORS: 1BH, 4H, 5H, 6H, 7H, 8H, 8/14H, 8/27/33H, 10/613, 12H, 14H, 24H18, 26H, 27AH, 31H, 33H, 130H, 626H
GR COLORS: 4GR, 10/613GR, 2418GR, 25GR, 26GR, 88GR

Monofilament top with lace front



Hannah

WEIGHT: 3.95 oz.
BANG: 5½"
TOP: 4 - 11"
SIDES: 3½ - 9"
BACK: 3½ - 9"
OVERALL: 12½"
REF#: 4782
COLOR SHOWN: 2418GR
COLORS: 1BH, 4H, 5H, 6H, 7H, 8H, 8/14H, 10/613, 12H, 14H, 16H, 24H18, 25H, 26H, 31H, 626H
GR COLORS: 4GR, 8/27/26GR, 10/613GR, 2418GR, 25GR, 26GR, 38/56GR, 60/101GR, 88GR, 131GR, 614GR

Monofilament top with lace front

Scarlet

WEIGHT: 4.30 oz.
BANG: 7"
TOP: 11-13"
SIDES: 11-13"
BACK: 11-13"
OVERALL: 15"
REF#: 4770
COLOR SHOWN: 14H
COLORS: 1BH, 4H, 5H, 6H, 7H, 8H, 8/14H, 8/27/33H, 12AH, 12H, 14H, 16H, 24H18, 26H, 27AH, 31H
GR COLORS: 4GR, 8/27/26GR, 2418GR, 26GR, 88GR, 131GR

Monofilament top with lace front





Farrah

WEIGHT: 2.35 oz.
BANG: 5½"
TOP: 3½ - 6½"
SIDES: 4½ - 6½"
BACK: 2½ - 6½"
OVERALL: 9"
REF#: 4756
COLOR SHOWN: 38/56GR
COLORS: 1BH, 4H, 5H, 6H, 7H, 8H, 8/14H, 8/27/33H, 12H, 14H, 16H, 24H18, 25H, 26H, 31H, 37, 38, 43, 44, 51, 56, 60
GR COLORS: 4GR, 8/27/26GR, 10/613GR, 2418GR, 25GR, 26GR, 38/56GR, 60/101GR, 88GR, 614GR

Monofilament top with lace front



Ava

WEIGHT: 5.65 oz.
BANG: 11½"
TOP: 11¼ - 11¾"
SIDES: 11½ - 14½"
BACK: 12½ - 15½"
OVERALL: 20"
REF#: 4742
COLOR SHOWN: 5H
COLORS: 1BH, 4H, 5H, 6H, 7H, 8H, 8/14H, 8/27/33H, 12H, 14H, 16H, 24H18, 26H, 88H, 130H, 131H, 614H, 626H

Monofilament top with full lace front



Fiona

WEIGHT: 3.30 oz.
BANG: 7"
TOP: 5¼ - 9"
SIDES: 7½- 8½"
BACK: 6 - 8½"
OVERALL: 13"
REF#: 4749
COLOR SHOWN: 88GR
COLORS: 1BH, 4H, 5H, 6H, 7H, 8H, 8/14H, 8/27/33H, 10/613, 12H, 14H, 16H, 24H18, 25H, 26H, 27AH, 31H, 33H, 88H, 614H, 626H
GR COLORS: 4GR, 10/613GR, 2418GR, 25GR, 26GR, 88GR

Monofilament top with lace front



Lace front styles

...provide a seamless transition at the hairline resulting in a most natural look when wearing our "lace front" styles! Our special technique that is used to meticulously sew each individual hair into our lace material enables the ability to style your hair in any direction! Obtain the desired look you prefer.

Your hairline, your hair, the way you want with HM's lace front styles.

Tiffany

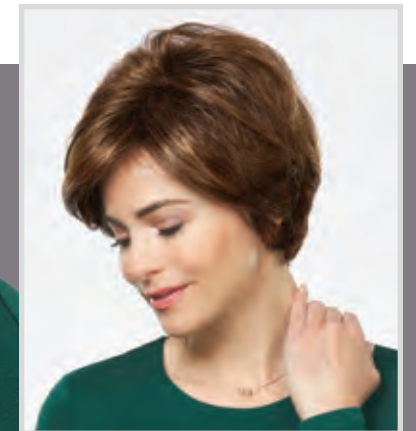
WEIGHT: 3.75 oz.
BANG: 7"
TOP: 4 - 10½"
SIDES: 7½ - 9"
BACK: 6½ - 9"
OVERALL: 13"
REF#: 2473
COLOR SHOWN: 626H
COLORS: 1BH, 4H, 5H, 6H, 7H, 8H, 8/14H, 8/27/33H, 10/613, 12H, 14H, 24H18, 25H, 26H, 27AH, 31H, 626H, 88H
GR COLORS: 4GR, 10/613GR, 2418GR, 25GR, 26GR, 88GR

Lace front

Carmen

WEIGHT: 2.40 oz.
BANG: 5"
TOP: 6"
SIDES: 5"
BACK: 5"
REF#: 2496
COLOR SHOWN: 7H
COLORS: 1BH, 4H, 5H, 6H, 7H, 8H, 8/14H, 8/27/33H, 10/613, 12H, 14H, 16H, 24H18, 25H, 26H, 31H, 33H, 37, 43, 56, 60
GR COLORS: 10/613GR, 2418GR, 25GR, 26GR, 38/56GR, 60/101GR, 88GR, 614GR

Lace front





Jules



WEIGHT: 2.75 oz.
BANG: 7"
TOP: 3¼ - 7½"
SIDES: 3¼ - 6½"
BACK: 4½ - 6½"
OVERALL: 10"
REF#: 2481
COLOR SHOWN: 26H
COLORS: 1BH, 4H, 5H, 6H, 7H, 8H, 8/14H, 8/27/33H, 10/613, 12AH, 12H, 14H, 16H, 24H18, 25H, 26H, 27AH, 31H, 33H, 88H, 130H, 614H, 626H
GR COLORS: 4GR, 8/27/26GR, 10/613GR, 2418GR, 25GR, 26GR, 60/101GR, 88GR, 131GR, 614GR

Lace front

Harper

WEIGHT: 4.70 oz.
BANG: 6½"
TOP: 8½ - 12"
SIDES: 5 - 13½"
BACK: 5 - 13½"
OVERALL: 18"
REF#: 2472
COLOR SHOWN: 14H
COLORS: 1BH, 4H, 5H, 6H, 7H, 8H, 8/14H, 8/27/33H, 10/613, 12AH, 12H, 14H, 16H, 24H18, 25H, 26H, 27AH, 31H, 33H, 88H, 130H, 614H, 626H
GR COLORS: 4GR, 8/27/26G, 10/613GR, 2418GR, 25GR, 26GR, 88GR, 131GR, 614GR

Lace front



Bonnie



WEIGHT: 1.65 oz.
BANG: 3½"
TOP: 2 - 3½"
SIDES: 2 - 2½"
BACK: 2 - 2½"
REF#: 2458
COLOR SHOWN: 38/56GR
COLORS: 1BH, 4H, 5H, 6H, 7H, 8H, 8/14H, 8/27/33H, 10/613, 12AH, 12H, 14H, 16H, 24H18, 25H, 26H, 27AH, 31H, 33H, 37, 38, 43, 44, 51, 56, 60, 88H, 614H
GR COLORS: 38/56GR, 60/101GR

Petite Average headsize
Lace front



Dylan

WEIGHT: 2.15 oz.
BANG: 4 - 6"
TOP: 2¼ - 6"
SIDES: 1¾ - 3¼"
BACK: 1½ - 3¼"
REF#: 2475
COLOR SHOWN: 24H18
COLORS: 4H, 5H, 6H, 7H, 8H, 8/14H, 8/27/33H, 12H, 14H, 16H, 24H18, 26H, 31H, 33H, 37, 43, 51H, 56, 60H, 88H
GR COLORS: 10/613GR, 2418GR, 26GR, 38/56GR, 60/101GR, 88GR, 614GR

Lace front





Lace front/lace part styles

...provide the same seamless transition at the hairline AND a natural lace part area using the same meticulous craftsmanship to help create additional looks in styling *(described on page 20)*. The lace part area exemplifies the appearance of hair growing from your scalp.

Select the ready-to-wear style that looks best for you and choose your own part. The preferred look is built right into your hair with HM's lace front/lace part styles!



DEVON, page 4

KATIE, page 30

WILLOW, page 29

Candace

WEIGHT: 3.75 oz.

BANG: 10"

TOP: 9 - 14"

SIDES: 5 - 13"

BACK: 5 - 13"

OVERALL: 15"

REF#: 2492

COLOR SHOWN: 626H

COLORS: 1BH, 4H, 5H, 6H, 7H, 8H, 8/14H, 10/613, 12H, 14H, 16H, 24H18, 25H, 31H, 626H

GR COLORS: 8/27/26GR, 10/613GR, 2418GR, 25GR, 26GR, 88GR, 131GR, 614GR

Lace front with center lace part



Brooklyn

WEIGHT: 3.25 oz.
BANG: 8"
TOP: 12"
SIDES: 10"
BACK: 9½"
OVERALL: 12"
REF#: 2480
COLOR SHOWN: 31H
COLORS: 1BH, 4H, 5H, 6H, 7H, 8H, 8/14H, 8/27/33H, 10/613, 12AH, 12H, 14H, 16H, 24H18, 26H, 27AH, 31H
GR COLORS: 4GR, 10/613GR, 2418GR, 26GR, 60/101GR, 88GR, 614GR

*Petite Average headsizes
 Lace front with lace part*



Naomi

WEIGHT: 2.40 oz.
BANG: 7½"
TOP: 4½ - 7½"
SIDES: 3½ - 6"
BACK: 2 - 6"
OVERALL: 8½"
REF#: 2493
COLOR SHOWN: 88GR
COLORS: 1BH, 5H, 6H, 7H, 8H, 8/14H, 12H, 14H, 24H18, 25H, 26H, 27AH, 31H
GR COLORS: 4GR, 8/27/26GR, 10/613GR, 2418GR, 25GR, 26GR, 614GR, 88GR

Lace front with lace part



Riley

WEIGHT: 4.40 oz.
BANG: 10"
TOP: 7 - 12"
SIDES: 10 - 12"
BACK: 12"
OVERALL: 16"
REF#: 2497
COLOR SHOWN: 8/27/33H
COLORS: 1BH, 4H, 5H, 6H, 7H, 8H, 8/14H, 8/27/33H, 10/613, 12H, 14H, 16H, 24H18, 25H, 26H, 31H, 626H
GR COLORS: 8/27/26GR, 10/613GR, 2418GR, 25GR, 26GR, 88GR, 131GR, 614GR

Lace front with center lace part





Presley

WEIGHT: 4.80 oz.

BANG: 10¼"

TOP: 9 - 13"

SIDES: 9 - 12"

BACK: 9 - 12"

OVERALL: 18½"

REF#: 2478

COLOR SHOWN: 26H

COLORS: 1BH, 4H, 5H, 6H, 7H, 8H, 8/14H, 8/27/33H, 12H, 14H, 16H, 24H18, 26H, 27AH, 31H, 626H

GR COLORS: 4GR, 2418GR, 26GR, 88GR, 131GR, 614GR

Lace front with lace part



Willow

WEIGHT: 5.05 oz.

BANG: 8"

TOP: 13"

SIDES: 11½ - 16"

BACK: 11½ - 16"

OVERALL: 23"

REF#: 2495

COLOR SHOWN: 26H

COLORS: 1BH, 4H, 5H, 6H, 7H, 8H, 8/14H, 10/613, 12H, 14H, 16H, 24H18, 25H, 26H, 31H, 626H

GR COLORS: 8/27/26GR, 10/613GR, 2418GR, 25GR, 26GR, 88GR, 131GR, 614GR

Lace front with lace part





Katie



WEIGHT: 2.70 oz.
BANG: 4¼"
TOP: 3 - 6½"
SIDES: 4 - 6½"
BACK: 6½"
OVERALL: 6½"
REF#: 2509
COLOR SHOWN: 5H
COLORS: 1BH, 4H, 5H, 7H, 8H, 8/14H, 8/27/33H, 10/613, 12H, 14H, 16H, 24H18, 25H, 26H, 33H, 37, 43, 51, 56, 60, 130H
GR COLORS: 10/613GR, 2418GR, 25GR, 26GR, 38/56GR, 60/101GR, 88GR

Lace front with lace part



Lindsay

WEIGHT: 2.35 oz.
BANG: 4"
TOP: 3½ - 6"
SIDES: 3½ - 4½"
BACK: 3½ - 4½"
REF#: 2491
COLOR SHOWN: 10/613GR
COLORS: 1BH, 4H, 5H, 6H, 7H, 8H, 8/14H, 8/27/33H, 10/613, 12H, 14H, 16H, 24H18, 25H, 26H, 27AH, 31H, 33H, 37, 43, 51H, 56, 60H, 88H, 130H
GR COLORS: 8/27/26GR, 10/613GR, 2418GR, 25GR, 26GR, 38/56GR, 60/101GR, 88GR, 614GR

Lace front with lace part



Avery

WEIGHT: 3.30 oz.
BANG: 8½"
TOP: 4 - 10½"
SIDES: 6½ - 9½"
BACK: 4 - 9½"
OVERALL: 11"
REF#: 2513
COLOR SHOWN: 626H
COLORS: 1BH, 4H, 5H, 6H, 7H, 8H, 8/14H, 8/27/33H, 10/613, 12H, 14H, 16H, 24H18, 25H, 33H, 44, 51, 60, 626H
GR COLORS: 10/613GR, 2418GR, 25GR, 26GR, 60/101GR, 88GR, 614GR

Lace front with center lace part





Hand-crafted machine-made styles

...still made by hand, precisely using machines to sew each hair, each weft to form a perfectly fitting cap. Utilizing the most lightweight materials available to stretch to the desired size, while always retaining the shape of the cap.

Create the look that is desired, the look and feel that you want.

Carly

WEIGHT: 2.65 oz.
BANG: 4"
TOP: 3 - 4¾"
SIDES: 3 - 3½"
BACK: 1¾ - 3½"
REF#: 2515
COLOR SHOWN: 8/27/33H
COLORS: 1BH, 4H, 5H, 6H, 7H, 8H, 8/14H, 8/27/33H, 10/613, 12H, 14H, 16H, 24H18, 26H, 27AH, 31H, 37, 38, 43, 51, 56, 60, 88H
GR COLORS: 10/613GR, 2418GR, 26GR, 60/101GR



Claire

WEIGHT: 3.45 oz.
BANG: 5½"
TOP: 4¾ - 7"
SIDES: 5½ - 6¼"
BACK: 4¾ - 6¼"
OVERALL: 10"
REF#: 2517
COLOR SHOWN: 626H
COLORS: 1BH, 5H, 7H, 12H, 16H, 33H, 626H
GR COLORS: 4GR, 8/27/26GR, 10/613GR, 2418GR, 25GR, 26GR, 60/101GR, 88GR, 131GR, 614GR



Mariah

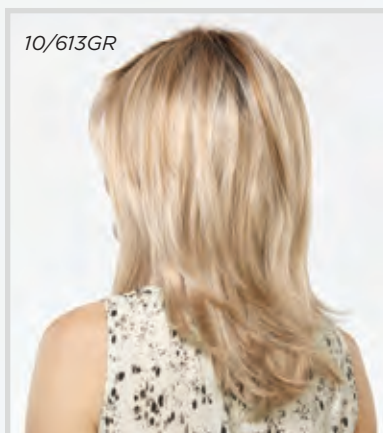
WEIGHT: 3.25 oz.
BANG: 3½"
TOP: 2½ - 9½"
SIDES: 5 - 7"
BACK: 3½ - 8½"
OVERALL: 11"
REF#: 2510
COLOR SHOWN: 10/613
COLORS: 1BH, 4H, 5H, 6H, 7H, 8H, 8/14H, 8/27/33H, 10/613, 12H, 14H, 16H, 24H18, 26H, 27AH, 31H, 37, 43, 51, 56, 60, 626H
GR COLORS: 10/613GR, 2418GR, 25GR, 26GR, 38/56GR, 60/101GR, 88GR



Hope

WEIGHT: 4.90 oz.
BANG: 5"
TOP: 4 - 11"
SIDES: 4 - 11"
BACK: 4 - 11"
OVERALL: 16½"
REF#: 2511
COLORS SHOWN: 10/613GR,
60/101GR
COLORS: 1BH, 4H, 5H, 6H,
7H, 8H, 8/14H, 8/27/33H,
10/613, 12AH, 12H, 14H, 16H,
24H18, 26H, 27AH, 31H, 626H
GR COLORS: 10/613GR,
2418GR, 25GR, 26GR,
38/56GR, 60/101GR, 88GR,
131GR, 614GR

Monofilament crown area



Savannah

WEIGHT: 4.00 oz.
BANG: 6"
TOP: 5 - 10½"
SIDES: 9 - 11"
BACK: 9½ - 11"
OVERALL: 16"
REF#: 2437
COLOR SHOWN: 8/27/26GR
COLORS: 1BH, 4H, 5H, 6H,
7H, 8H, 8/14H, 8/27/33H,
12H, 14H, 24H18, 26H, 27AH,
88H, 626H
GR COLORS: 8/27/26GR,
2418GR, 26GR, 88GR, 614GR



Celine

WEIGHT: 5.40 oz.
BANG: 3"
TOP: 12 - 17"
SIDES: 15 - 17"
BACK: 13 - 17"
OVERALL: 19"
REF#: 2457
COLOR SHOWN: 131H
COLORS: 1BH, 4H, 5H, 6H,
7H, 8H, 8/14H, 8/27/33H,
12H, 14H, 24H18, 26H, 31H,
130H, 131H, 614H

Monofilament crown area

Audrey

WEIGHT: 2.25 oz.
BANG: 4½"
TOP: 4½ - 6"
SIDES: 2 - 3"
BACK: 2 - 5½"
REF#: 2430
COLOR SHOWN: 614H
COLORS: 1BH, 4H, 5H, 6H, 7H, 8H, 8/14H, 8/27/33H, 12H, 14H, 16H, 24H18, 25H, 26H, 27AH, 37, 38H, 43, 51H, 56, 60H, 88H, 614H
GR COLORS: 2418GR, 25GR, 26GR, 614GR



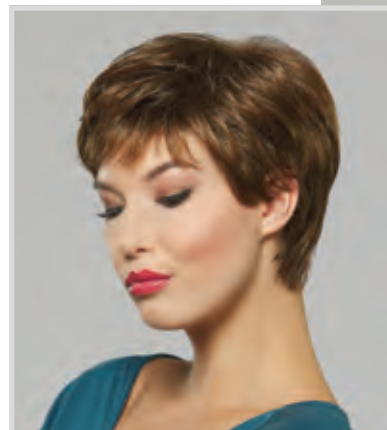
Bailey

WEIGHT: 2.25 oz.
BANG: 4¼"
TOP: 3¾"
SIDES: 3 - 3½"
BACK: 3 - 3½"
REF#: 2439
COLOR SHOWN: 7H
COLORS: 1BH, 4H, 5H, 6H, 7H, 8H, 8/14H, 8/27/33H, 12H, 14H, 16H, 24H18, 26H, 27AH, 33H, 37, 38H, 43, 44H, 51H, 56, 60H, 88H
GR COLORS: 8/27/26GR, 2418GR, 26GR, 88GR



Amber

WEIGHT: 2.00 oz.
BANG: 2½"
TOP: 2 - 4"
SIDES: 2 - 3"
BACK: 2 - 3"
REF#: 2461
COLOR SHOWN: 12AH
COLORS: 1BH, 4H, 5H, 6H, 7H, 8H, 8/14H, 8/27/33H, 12AH, 12H, 14H, 16H, 24H18, 26H, 27AH, 37, 38, 43, 56, 60, 88H
GR COLORS: 38/56GR, 60/101GR



Annette

WEIGHT: 1.95 oz.
BANG: 3½"
TOP: 2½ - 5"
SIDES: 2½ - 3"
BACK: 2 - 3½"
REF#: 2369
COLOR SHOWN: 7H
COLORS: 1BH, 4H, 5H, 6H, 7H, 8H, 8/14H, 8/27/33H, 10/613, 12AH, 12H, 14H, 16H, 24H18, 25H, 26H, 27AH, 33H, 37, 38H, 43, 44H, 51H, 56, 60H, 88H, 614H
GR COLORS: 10/613GR, 2418GR, 25GR, 26GR, 38/56GR, 60/101GR, 88GR



Elena

WEIGHT: 2.00 oz.
BANG: 4"
TOP: 2¾ - 4"
SIDES: 2½ - 4"
BACK: 2½ - 4"
REF#: 2501
COLOR SHOWN: 8/27/33H
COLORS: 4H, 6H, 7H, 8H, 8/14H, 8/27/33H, 12H, 14H, 16H, 24H18, 26H, 27AH, 33H, 37, 38H, 43, 51H, 56, 60H, 88H, 614H



Emily

WEIGHT: 1.75 oz.
BANG: 3½"
TOP: 2 - 3½"
SIDES: 2 - 3"
BACK: 2 - 3"
REF#: 2503
COLOR SHOWN: 37
COLORS: 4H, 6H, 7H, 8H, 8/14H, 8/27/33H, 12H, 14H, 16H, 24H18, 26H, 37, 38H, 43, 51H, 56, 60H, 88H
GR COLORS: 38/56GR, 60/101GR



Jessica

WEIGHT: 1.95 oz.
BANG: 2¾"
TOP: 1¾ - 3¼"
SIDES: 2¼ - 2¾"
BACK: 1¾ - 2¾"
REF#: 2485
COLOR SHOWN: 8/14H
COLORS: 4H, 6H, 7H, 8H, 8/14H, 8/27/33H, 12H, 12AH, 14H, 16H, 24H18, 25H, 26H, 27AH, 31H, 37, 38, 43, 44, 51, 56, 60, 88H
GR COLORS: 38/56GR, 60/101GR

Marnie

WEIGHT: 1.75 oz.
BANG: 4"
TOP: 2¾ - 4"
SIDES: 2½ - 3½"
BACK: 2½ - 3½"
REF#: 2500
COLOR SHOWN: 14H
COLORS: 4H, 6H, 7H, 8H, 8/14H, 8/27/33H, 12H, 14H, 16H, 24H18, 26H, 27AH, 33H, 37, 43, 51, 56, 60, 88H, 130H
GR COLORS: 2418GR, 26GR, 88GR, 131GR, 614GR



Faith

WEIGHT: 1.65 oz.
BANG: 3"
TOP: 1¾ - 3½"
SIDES: 2½"
BACK: 1¾ - 3½"
REF#: 2441
COLOR SHOWN: 8/27/33H
COLORS: 1BH, 4H, 5H, 6H, 7H, 8H, 8/14H, 8/27/33H, 12AH, 12H, 14H, 16H, 24H18, 25H, 26H, 27AH, 33H, 37, 38, 43, 44, 51, 56, 60, 88H, 614H
GR COLORS: 4GR, 10/613GR, 2418GR, 25GR, 26GR, 38/56GR, 60/101GR, 88GR, 131GR, 614GR

*Petite headsize
Monofilament crown area*



Ruby

WEIGHT: 1.90 oz.
BANG: 3"
TOP: 2 - 3"
SIDES: 2¼ - 2½"
BACK: 2¼ - 2½"
REF#: 2467
COLOR SHOWN: 24H18
COLORS: 4H, 5H, 7H, 8H, 8/14H, 8/27/33H, 12H, 14H, 16H, 24H18, 26H, 27AH, 31H, 33H, 37, 38H, 43, 44H, 51H, 56, 60H, 88H
GR COLORS: 38/56GR, 60/101GR

Petite Average headsize



Danielle

WEIGHT: 3.25 oz.
BANG: 4½"
TOP: 3½ - 6¼"
SIDES: 6¼ - 7¾"
BACK: 5½ - 7¾"
OVERALL: 14½"
REF#: 2409
COLOR SHOWN: 626H
COLORS: 1BH, 4H, 5H, 6H, 7H, 8H, 8/14H, 8/27/33H, 12H, 14H, 16H, 24H18, 26H, 33H, 88H, 130H, 614H, 626H



Felicia

WEIGHT: 4.20 oz.
BANG: 5"
TOP: 6 - 9"
SIDES: 8 - 9"
BACK: 7 - 9"
OVERALL: 13"
REF#: 2452
COLOR SHOWN: 8/14H
COLORS: 1BH, 4H, 5H, 6H, 7H, 8H, 8/14H, 8/27/33H, 10/613, 12H, 14H, 16H, 24H18, 26H, 27AH, 31H, 33H, 88H, 130H, 614H, 626H
GR COLORS: 4GR, 2418GR, 26GR, 131GR, 614GR



Bethany

WEIGHT: 4.05 oz.
BANG: 5"
TOP: 11"
SIDES: 10 - 11½"
BACK: 10 - 11½"
OVERALL: 18"
REF#: 2444
COLOR SHOWN: 26GR
COLORS: 1BH, 4H, 5H, 6H, 7H, 8H, 8/14H, 8/27/33H, 12AH, 12H, 14H, 16H, 24H18, 26H, 27AH, 31H, 33H, 626H
GR COLORS: 2418GR, 26GR, 88GR, 131GR, 614GR

Gabby

WEIGHT: 2.30 oz.
BANG: 4½"
TOP: 4 - 5¾"
SIDES: 3½ - 4½"
BACK: 3½ - 4½"
REF#: 2450
COLOR SHOWN: 88GR
COLORS: 1BH, 4H, 5H, 6H, 7H, 8H, 8/14H, 8/27/33H, 10/613, 12H, 14H, 16H, 24H18, 26H, 31H, 33H, 88H, 626H
GR COLORS: 10/613GR, 2418GR, 25GR, 26GR, 88GR, 131GR, 614GR





Nikki

WEIGHT: 2.25 oz.
BANG: 4½"
TOP: 3½ - 5½"
SIDES: 4 - 5"
BACK: 4 - 5"
OVERALL: 12½"
REF#: 2393
COLOR SHOWN: 626H
COLORS: 1BH, 4H, 5H, 6H, 7H, 8H, 8/14H, 8/27/33H, 12H, 14H, 16H, 24H18, 26H, 27AH, 31H, 33H, 37, 38, 43, 51, 56, 60, 88H, 626H
GR COLORS: 2418GR, 26GR



Paige

WEIGHT: 3.30 oz.
BANG: 3½"
TOP: 3½ - 7½"
SIDES: 6½ - 7½"
BACK: 5 - 7½"
OVERALL: 11"
REF#: 2482
COLOR SHOWN: 6H
COLORS: 1BH, 4H, 5H, 6H, 7H, 8H, 8/14H, 8/27/33H, 10/613, 12AH, 12H, 14H, 16H, 24H18, 25H, 26H, 27AH, 31H, 88H, 130H, 626H
GR COLORS: 4GR, 10/613GR, 2418GR, 25GR, 26GR, 131GR, 614GR



Holly

WEIGHT: 2.75 oz.
BANG: 5½"
TOP: 8"
SIDES: 5½"
BACK: 5"
OVERALL: 9½"
REF#: 2445
COLOR SHOWN: 14H
COLORS: 1BH, 4H, 5H, 6H, 7H, 8H, 8/14H, 8/27/33H, 12H, 14H, 16H, 24H18, 26H, 31H, 33H, 37, 38, 43, 51, 56, 60, 626H
GR COLORS: 4GR, 2418GR, 26GR, 88GR, 131GR



Amelia

WEIGHT: 1.80 oz.
BANG: 3¾"
TOP: 3¾"
SIDES: 3¼ - 3¾"
BACK: 3¼ - 3¾"
REF#: 2507
COLOR SHOWN: 26H
COLORS: 1BH, 4H, 6H, 8H, 8/14H, 8/27/33H, 12H, 14H, 16H, 26H, 38, 43, 44, 51, 56, 60



Kayla

WEIGHT: 2.95 oz.
BANG: 4"
TOP: 4 - 4½"
SIDES: 4½ - 5½"
BACK: 4½ - 5½"
REF#: 2351
COLOR SHOWN: 12H
COLORS: 1BH, 4H, 5H, 6H, 7H, 8H, 8/14H, 8/27/33H, 12AH, 12H, 14H, 16H, 24H18, 26H, 27AH, 33H, 37, 38, 43, 44, 51, 56, 60, 88H, 130H, 131H, 614H



Lola

WEIGHT: 4.15 oz.
BANG: 5"
TOP: 5½ - 9"
SIDES: 9"
BACK: 7 - 9"
OVERALL: 12"
REF#: 2487
COLOR SHOWN: 10/613GR
COLORS: 1BH, 4H, 5H, 7H, 8H, 8/27/33H, 12H, 14H, 16H, 24H18, 25H, 31H
GR COLORS: 8/27/26GR, 10/613GR, 25GR, 26GR, 88GR, 131GR



Human hair wigs

P R E M I E R E

...are intricately hand crafted to the smallest detail, these styles offer exceptional comfort while looking amazingly realistic.

Premiere utilizes 100% Remy hair which has the cuticle layer preserved to protect each hair strand from environmental damage. Premiere Remy hair is healthy, smooth and soft. The strands of hair are meticulously knotted into the cap by hand. A monofilament top and lace front simulate realistic hair growth. Soft applications in the cap allow for a secure and comfortable fit. Salon inspired highlighting techniques are used to create the most realistic colors for every Premiere wig.

Premiere is the ultimate in luxurious hair!



SAPPHIRE, page 46

Emerald

WEIGHT: 5.70 oz.

BANG: 8½"

TOP: 9½"

SIDES: 10"

BACK: 8 - 10"

OVERALL: 13"

REF#: 5003

COLOR SHOWN: CHARDONNAY

COLORS: ESPRESSO, TRUFFLE,

CHESTNUT, CHOCOLATE,

CAPPUCCINO, CINNAMON,

SANGRIA, RUSSET,

GINGERBREAD, TOFFEE,

CHARDONNAY

GR COLORS: CHAMPAGNE R,

PLATINUM R

Remy human hair

100% hand knotted stretch cap with monofilament top and lace front

Secure application on front hairline, eartabs and nape



Sapphire

WEIGHT: 6.35 oz.
BANG: 15"
TOP: 16"
SIDES: 14 - 16"
BACK: 13 -16"
OVERALL: 22"
REF#: 5005
COLOR SHOWN: CAPPUCCINO
COLORS: ESPRESSO, TRUFFLE, CHESTNUT, CHOCOLATE, CAPPUCCINO, CINNAMON, SANGRIA, RUSSET, GINGERBREAD, TOFFEE, CHARDONNAY
GR COLORS: CHAMPAGNE R, PLATINUM R

*Remy human hair
 100% hand knotted stretch cap with monofilament top and lace front
 Secure application on front hairline, eartabs and nape*



Diamond

WEIGHT: 5.60 oz.
BANG: 9"
TOP: 11"
SIDES: 10 - 12"
BACK: 9 - 12"
OVERALL: 16"
REF#: 5001
COLOR SHOWN: CINNAMON
COLORS: ESPRESSO, TRUFFLE, CHESTNUT, CHOCOLATE, CAPPUCCINO, CINNAMON, SANGRIA, RUSSET, GINGERBREAD, TOFFEE, CHARDONNAY
GR COLORS: CHAMPAGNE R, PLATINUM R

*Remy human hair
 100% hand knotted stretch cap with monofilament top and lace front
 Secure application on front hairline, eartabs and nape*



P R E M I E R E Human hair colors



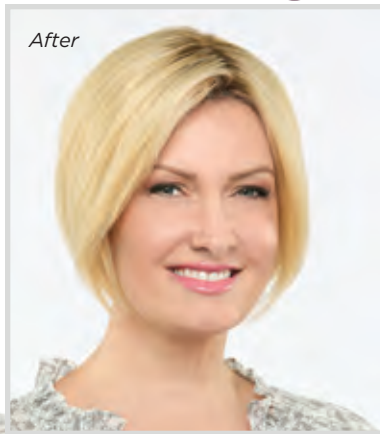
Premiere color swatches are used as a reference only. An exact match cannot be guaranteed due to the process of hand dying human hair.



Human hair enhancement styles

P R E M I E R E

...give new meaning to luxurious hair! Premiere enhancement pieces are produced with healthy and soft Remy hair from our exclusive resource. Our Remy hair can accentuate any hair style by seamlessly blending with a woman's own hair and integrate perfectly for an amazingly realistic appearance. All Premiere enhancement styles are produced with a monofilament base for natural styling with a center or side part and a polyurethane circumference if tape is necessary.



Allura

WEIGHT: 1.90 oz.
TOP: 8"
SIDES: 8"
BACK: 8"
OVERALL: 10"
REF#: 7055
COLOR SHOWN: PLATINUM R
COLORS: ESPRESSO, TRUFFLE, CHESTNUT, CHOCOLATE, CAPPUCCINO, CINNAMON, SANGRIA, GINGERBREAD, TOFFEE, CHARDONNAY
GR COLORS: CHAMPAGNE R, PLATINUM R

100% Remy human hair
Hair enhancing top piece with 5¾ x 5½" mono base



Regal

WEIGHT: 2.80 oz.
TOP: 14"
SIDES: 14"
BACK: 14"
OVERALL: 16"
REF#: 7053
COLOR SHOWN: CHOCOLATE
COLORS: ESPRESSO, TRUFFLE, CHESTNUT, CHOCOLATE, CAPPUCCINO, CINNAMON, SANGRIA, GINGERBREAD, TOFFEE, CHARDONNAY
GR COLORS: CHAMPAGNE R, PLATINUM R

100% Remy human hair
Hair enhancing top piece with 5¾ x 5½" mono base





Synthetic hair enhancement styles

...are well designed styles and an amazing alternative to a full wig. A simple solution for fine or thinning hair. Our enhancements add volume, fullness and body while easily blending into a woman's own hair. With focus on the detail regarding every aspect, fiber density, highlighting techniques and comb placement has resulted in styles that offer women the hair of their dreams. The enhancement styles on the following pages are produced in synthetic fiber for easy care and maintenance.

Lux

WEIGHT: 1.05 oz.
TOP: 12"
SIDES: 12"
BACK: 12"
OVERALL: 14"
REF#: 7050
COLOR SHOWN: CAPPUCCINO
COLORS: ESPRESSO, TRUFFLE, CHESTNUT, CHOCOLATE, CAPPUCCINO, CINNAMON, SANGRIA, GINGERBREAD, TOFFEE, CHARDONNAY
GR COLORS: CHAMPAGNE R, PLATINUM R

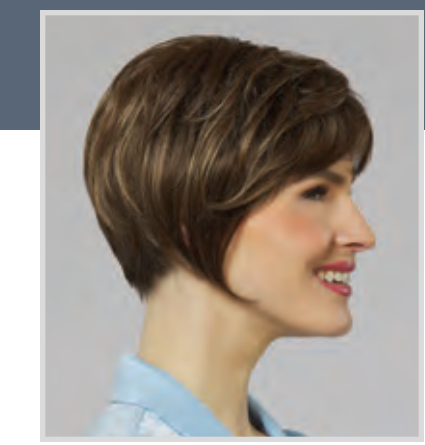
*100% Remy human hair
Hair enhancing top piece
with 5 x 2 3/4" mono base*



Splendor

WEIGHT: 1.60 oz.
TOP: 18"
SIDES: 18"
BACK: 18"
OVERALL: 20"
REF#: 7052
COLOR SHOWN: CAPPUCCINO
COLORS: ESPRESSO, TRUFFLE, CHESTNUT, CHOCOLATE, CAPPUCCINO, CINNAMON, SANGRIA, GINGERBREAD, TOFFEE, CHARDONNAY
GR COLORS: CHAMPAGNE R, PLATINUM R

*100% Remy human hair
Hair enhancing top piece
with 5 x 2 3/4" mono base*



Delight

WEIGHT: 1.05 oz.
TOP: 3 1/2 - 4 1/2"
SIDES: 3 1/2 - 5 1/2"
BACK: 3 1/2 - 5 1/2"
OVERALL: 6 1/2"
REF#: 7004
COLOR SHOWN: 7H
COLORS: 1BH, 4H, 5H, 6H, 7H, 8H, 8/14H, 8/27/33H, 10/613, 12AH, 12H, 14H, 16H, 24H18, 25H, 26H, 27AH, 31H, 33H, 38, 44, 51, 56, 60, 88H
GR COLORS: 10/613GR, 2418GR, 25GR, 26GR, 88GR, 614GR

*Hair enhancing top piece
with 6 1/4 x 6 3/4" mono
and hand knotted base
Mono area is 5 1/4 x 4 3/4"*



Envy

WEIGHT: 2.20 oz.

BANG: 7"

TOP: 5½ - 9"

SIDES: 9"

BACK: 9"

OVERALL: 9½"

REF#: 7007

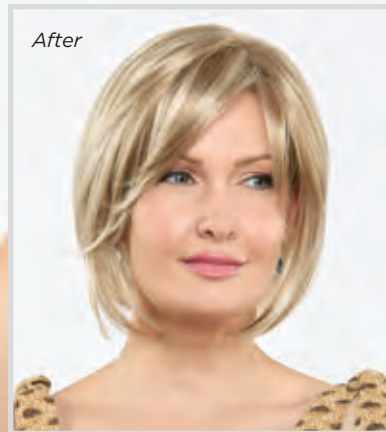
COLOR SHOWN: 10/613

COLORS: 1BH, 4H, 5H, 6H, 7H, 8H, 8/14H, 8/27/33H, 10/613, 12H, 14H, 16H, 24H18, 26H, 31H, 33H, 38, 44, 51, 56, 60, 88H

GR COLORS: 10/613GR, 2418GR, 26GR, 88GR, 614GR

Hair enhancing top piece with 6½ x 7" mono and wefted base

Mono area is 5¼ x 4¼"



Matrix

WEIGHT: 2.95 oz.

TOP: 18"

SIDES: 18"

BACK: 18"

OVERALL: 18"

REF#: 7006

COLOR SHOWN: 8/14H

COLORS: 1BH, 4H, 5H, 6H, 7H, 8H, 8/14H, 8/27/33H, 12H, 14H, 16H, 24H18, 25H, 26H, 27AH, 31H, 33H, 88H

GR COLORS: 10/613GR, 2418GR, 25GR, 26GR, 88GR, 614GR

Hair enhancing top piece with 5¾ x 5½" mono base





Ultra

WEIGHT: 3.05 oz.
TOP: 12½"
SIDES: 11½ - 12½"
BACK: 11½ - 12½"
OVERALL: 11½ - 12½"
REF#: 7001
COLOR SHOWN: 7H
COLORS: 1BH, 4H, 5H, 6H, 7H, 8H, 8/14H, 8/27/33H, 12AH, 12H, 14H, 16H, 24H18, 26H, 27AH, 31H, 33H, 88H
GR COLORS: 2418GR, 26GR, 88GR, 614GR



*Hair enhancing top piece with 6½ x 7" mono and wefted base
 Mono area is 5¼ x 4¼"*



Secret



WEIGHT: 1.35 oz.
TOP: 9 - 11"
SIDES: 12 - 13"
BACK: 13 - 14"
OVERALL: 9 - 14"
REF#: 7002
COLOR SHOWN: 12AH
COLORS: 1BH, 4H, 5H, 6H, 7H, 8H, 8/14H, 8/27/33H, 12AH, 12H, 14H, 16H, 24H18, 26H, 31H, 33H, 88H
GR COLORS: 2418GR, 26GR, 88GR, 614GR

Hair enhancing top piece with 5 x 2¾" mono base



Hairpieces



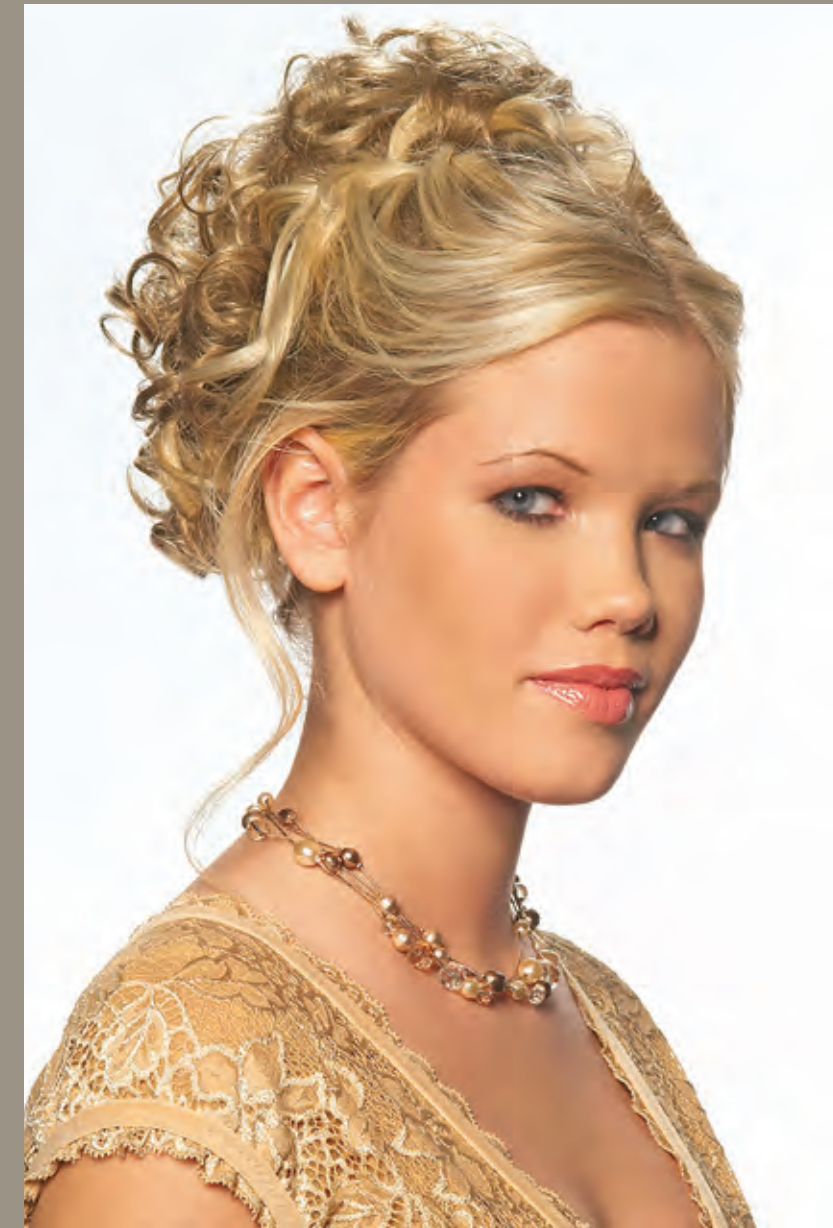
Temptation

OVERALL LENGTH: 24"
REF#: 8224
COLOR SHOWN: 88H
 Quick Combs®
 butterfly comb hairpiece



Charm

OVERALL LENGTH: 7"
REF#: 8220
COLOR SHOWN: 88H
 Quick Combs®
 butterfly comb hairpiece



Breezy

OVERALL LENGTH: 24"
REF#: 8089
COLOR SHOWN: 12AH
 ¾ cap hairpiece



Whirlwind

OVERALL LENGTH: 15 - 16"
REF#: 8223
COLOR SHOWN: 8H
 Quick Combs®
 butterfly comb hairpiece

Sassy

OVERALL LENGTH: 8½"
REF#: 8213
COLOR SHOWN: 26H
 Quick Combs®
 interlocking comb hairpiece

TEMPTATION AND WHIRLWIND ARE AVAILABLE IN COLORS: 1BH, 4H, 6H, 8H, 12H, 14H, 16H, 24H18, 26H, 33H, 88H, 614H **SASSY AND CHARM ARE AVAILABLE IN COLORS:** 1BH, 4H, 6H, 8H, 12H, 14H, 16H, 24H18, 26H, 33H, 38, 51, 56, 60, 88H, 614H **BREEZY IS AVAILABLE IN COLORS:** 1BH, 4H, 6H, 8H, 12AH, 14H, 16H, 24H18, 26H, 33H, 88H, 131H, 614H



Hair Accents

Designed for comfort, Hair Accents® beautifully blended hair is permanently attached to a 100% cotton cap creating a ready-to-wear hair fashion alternative with absolutely no styling needed. All Hair Accents styles are available in 13 naturally highlighted colors including new color 8/14H! Shorty Cap and Classic Cap are available in grey shades as well. Classic Hat is also available in a Navy color!

ALL HATS ARE AVAILABLE IN COLORS: 1BH, 4H, 6H, 8H, 8/14H, 12AH, 12H, 14H, 16H, 24H18, 27AH, 30H, 614H

CLASSIC AND SHORTY HATS ARE ALSO AVAILABLE IN COLORS: 38, 44, 51, 60



Classic Hat Beige
LENGTH: 8"
REF#: 8228
COLOR SHOWN: 44



Classic Hat Black
LENGTH: 8"
REF#: 8226
COLOR SHOWN: 12H



Classic Hat Navy
LENGTH: 8"
REF#: 8258
COLOR SHOWN: 8H



Shorty Hat Black
LENGTH: 5½"
REF#: 8225
COLOR SHOWN: 14H



Shorty Hat Beige
LENGTH: 5½"
REF#: 8230
COLOR SHOWN: 27AH



Curly Hat Black
LENGTH: 9"
REF#: 8249
COLOR SHOWN: 27AH



Long Hat Beige
LENGTH: 14"
REF#: 8229
COLOR SHOWN: 4H



Long Hat Black
LENGTH: 14"
REF#: 8227
COLOR SHOWN: 8/14H



Cap size adjustment to easily and comfortably fit all head sizes



Classic Band
WEIGHT: 3.55 oz.
OVERALL: 14"
REF#: 2323
COLOR SHOWN: 14H

2½" permanently attached black headband

Bottom left photo shows 228 Bang attached to headband



Bang

Bang
WEIGHT: 0.20 oz.
BANG: 3½ - 4½"
REF#: 228
COLOR SHOWN: 14H

Velcro strip with adhesive backing. Simply peel paper and attach adhesive to Band style or hat. Soft velvet material on opposite side.



CLASSIC BAND AND BANG ARE AVAILABLE IN COLORS: 1BH, 4H, 6H, 7H, 8H, 8/27/33H, 12AH, 12H, 14H, 16H, 24H18, 26H, 27AH, 33H, 38, 44, 51, 56, 60, 130H, 614H



Halo

Halo is created with comfort in mind while offering a simple solution to hair loss. Halo is a fast and easy option to a wig, a realistic wig alternative creating the illusion of a full head of hair. Comfortably fitting the circumference of the head, three silicone patches in the front and ultra-thin adjustments in the back personalize the fit and assist in securing Halo to the head.

Pairing perfectly with a hat, scarf, turban and most baseball caps, Halo is exceptionally lightweight and available in two lengths; a short chin length and a below the shoulder version. Beautifully highlighted colors assure a close match to any hair color. When time is of the essence, just slip-on Halo for a beautiful, believable new look. *Headwear not included!*

Halo

WEIGHT: 1.05 oz.
BANG: 5¼"
SIDES: 5¼"
BACK: 4½"
REF#: 8255
COLOR SHOWN: 12H



COLOR SHOWN: 27AH



COLOR SHOWN: 24H18

Halo Long

WEIGHT: 2.75 oz.
BANG: 6¼"
SIDES: 13"
BACK: 13¼"
REF#: 8256
COLOR SHOWN: 26H



COLOR SHOWN: 31H



COLOR SHOWN: 26H

HALO AND HALO LONG ARE AVAILABLE IN COLORS: 1BH, 4H, 6H, 7H, 8H, 12H, 14H, 24H18, 26H, 27AH, 31H, 33H, 51, 60

ACCESSORIES



Secure Grip

The perfect accessory to achieve a secure fit for wigs. Elasticized velour fabric with a Velcro closure comfortably stretches to secure wigs and other headwear from slipping or moving on the head.

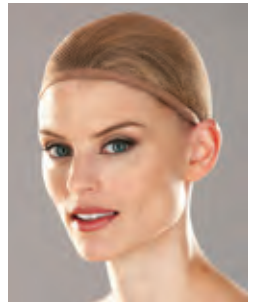
Available individually packaged in Beige, Black and Brown.



Comfort Cap

Mesh liner designed to keep the wig comfortable while preventing movement and slipping for a more secure fit.

Available in Beige, Black and Grey.



Lace Grip

Features the same application as secure grip. Includes a 3 inch lace area to fit comfortably and naturally under lace front styles.



Wig Care Products

Cleanse, Finish, Revitalize & Shape are specifically formulated to enhance and prolong the life of our exceptional wigs and hairpieces.

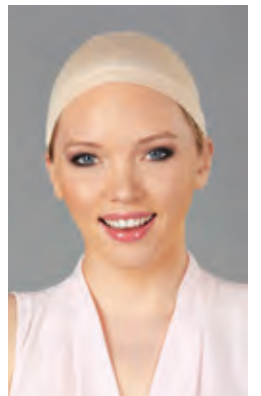
Henry Margu wig care products are available in cases of 12 eight ounce bottles.



Bamboo Cap

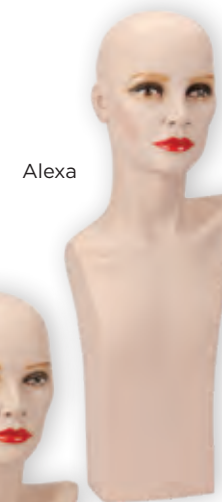
Exceptionally absorbent, breathable and ultra-soft, our Bamboo Cap is incredibly cool and comfortable to wear. Hypo-allergenic with natural antibacterial properties makes it resistant to odor and bacteria.

Available individually packaged in Beige, Black and Brown.



Accessory Mannequins

Enhancing the presentation of wigs and hairpieces, Shelby (17") and Alexa (25") have a natural skin tone and soft makeup to accentuate any hair color. Produced in a unique flexible PVC material that will resist scratching and chipping, these accessory heads will keep your display looking amazing for many years to come.

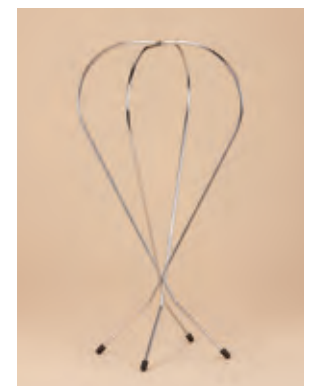


Shelby

Alexa

Wig Stands

Folding wig stands are ideal for storing and/or drying wigs. Made of sturdy plastic or metal, these convenient stands are easy to assemble and lay flat for traveling ease.





GRADIENT COLORS



COLORS

CAP CONSTRUCTION



Traditional

Traditional cap construction features a fine net material in the top area with an open cap in the back. Weftings attached to stretch elastic lace make the open back creating better ventilation to keep the head cooler. A Traditional cap or a wig utilizing components of this type of cap construction is often referred to as a “machine-made” cap.



Open Cap/Featherlight

Open cap is commonly referred to as a “capless” wig due to the lack of net material used in the top as on a Traditional cap. The entire cap is produced with weftings attached to thin stretch elastic lace. Our exclusive ultra thin weftings used in the Featherlight cap create super lightweight wigs that are exceptionally comfortable to wear.



Lace Front

A lace front wig has a hairline made of a fine lace mesh in which each hair is individually hand knotted. The lace varies in width from ¼ to 1½ inches. The lace typically extends across the entire front hairline. The benefit of a lace front wig is an amazingly realistic hairline that appears as if the hair is growing directly out of the scalp and allows the fiber in front to be styled off the face in any direction.



Lace Front with Lace Part

A lace front wig that also contains a wide lace part area. This could be a center or side part. This cap style offers an extremely natural appearance.



Hand Knotted

A Hand-Knotted wig is also referred to as a Hand-Tied wig. Hand-Tied wigs are made with a soft stretch lace base and the fiber is individually hand knotted into the base. This type of cap is lightweight and exceptionally comfortable and feels soft against the head. Hand-Tied wigs are produced with a Mono Top making them extremely natural looking as well and making this type of wig the most luxurious available.



Monofilament Top

Monofilament (Mono) is an extremely sheer mesh used to make a transparent base that creates a realistic looking scalp area and is then hand-knotted with individual fibers to simulate the appearance of natural hair growth. The fiber in a Monofilament Top (Mono Top) allows for multidirectional styling and parting creating amazing styling versatility and resulting in an extremely natural looking appearance. A Mono Top feels smoother against the scalp than a Traditional or Open Cap and more comfortable as a result.



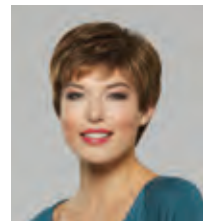
Monofilament Top with Lace Front

Mono Top with Lace Front wigs are produced the same as a Mono Top wig but utilizing a Lace Front as well to create the most natural front hairline in conjunction with the realistic characteristics of a Mono Top. This allows for amazing off the face styling. These wigs offer the most natural and realistic appearance due to the combination of the Mono Top and Lace Front.



Monofilament Crown

A Monofilament Crown (Mono Crown) cap contains a Mono area in the top area of a machine-made cap. This allows for the fiber in this area to have a more natural and realistic appearance that is flatter and with less volume in the top.



Amber 36



Amelia 43



Annette 37



Athena - M/L 13



Audrey 36



Ava - M/L 19



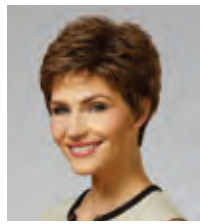
Holly 42



Hope 34



Iris - M/L 12



Jessica 38



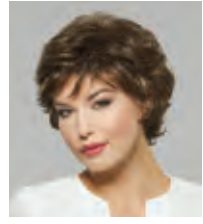
Jules - L 22



Katie - LP/L 30



Avery - LP/L 30



Bailey 37



Becky - M 14



Bethany 40



Bonnie - PA/L 23



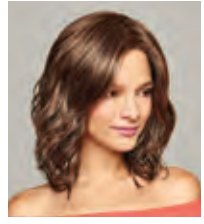
Breezy 55



Kayla 43



Kelly - PA/M 10



Kendall - M/L 11



Lindsay - LP/L 31



Lola 43



Lori - PA/M/L 8



Brie - PA/H/M/L 4



Brooklyn - PA/LP/L 26



Candace - LP/L 25



Carly 32



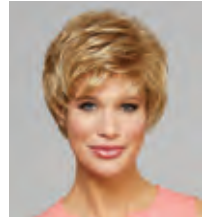
Carmen - L 21



Celine 35



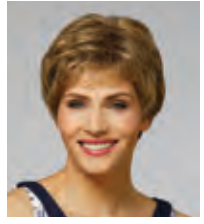
Mariah 33



Marnie 39



Michele - M/L 12



Monica - PA/M/L 14



Morgan - H/M/L 5



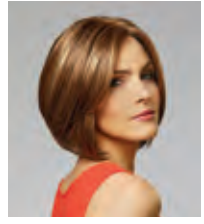
Naomi - LP/L 26



Charlotte - M/L 15



Charm 55



Chic - H/M/L 6



Claire 33



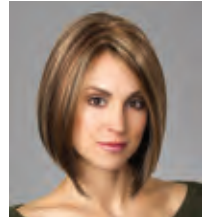
Classic Band 57



Danielle 40



Nikki 42



Nora - H/M/L 9



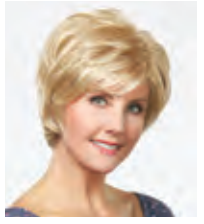
Paige 42



Peyton - M/L 16



Presley - LP/L 28



Renee - H/M/L 7



Devon - H/M/L 4



Diamond - HH/H/M/L 47



Dylan - L 23



Elena 38



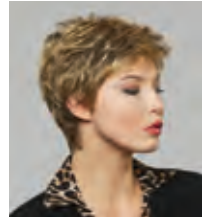
Emerald - HH/H/M/L 45



Emily 38



Riley - LP/L 27



Ruby - PA 39



Sabrina - P/M 14



Sapphire - HH/H/M/L 46



Savannah 35



Scarlet - M/L 17



Faith - P 39



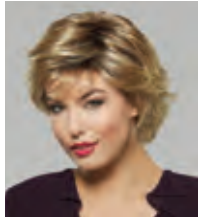
Farrah - M/L 18



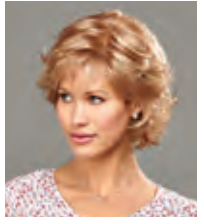
Felicia 41



Fiona - M/L 18



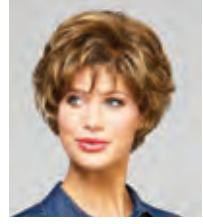
Gabby 41



Gianna - M/L 15



Skylar - PA/M/L 6



Stella - M 15



Taylor - M 13



Temptation 55



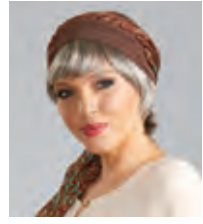
Tiffany - L 20



Toppers 48-54



Grace - PA/M/L 11



Halos 58



Hannah - M/L 17



Harper - L 22



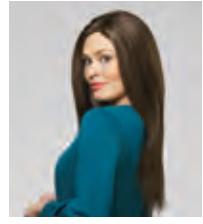
Hats 56-57



Hayden - M/L 16



Trish - PA/M/L 8



Violet - H/M/L 9



Whirlwind 55



Willow - LP/L 29

H Hand-knotted
 HH Human Hair
 L Lace Front
 LP Lace Part
 M Monofilament Top
 P Petite headsize
 PA Petite Average headsize



HM
Henry Margu