

HM

Henry Margu



HM

Henry Margu

William Margu standing in front of his West Philly millinery shop in 1950. The beginnings of the company he would soon form with his son Henry.



Trend-setting styles, cutting-edge colorations, incomparable quality and relentless dedication to our customers have secured Henry Margu's position as a leader of the "alternative" hair industry.

Since Henry Margu first came on the scene in Philadelphia in 1951, family ownership has developed the company into one of the most well respected international brands of wigs and hair fashions. From a humble beginning in the store front millinery shop of the family house, the perseverance and dedication of the Margu family has made us the oldest and most experienced wig manufacturer in the US. Over these many years, innovative ideas have helped us create some of the most intriguing styles and unique colors in the industry as well as crafting our reputation as a trendsetter. The design staff at Henry Margu has not only focused on developing exquisite fashions but also on achieving the highest quality standards for our products. While Henry Margu continues to grow, our core values and strong family culture have not changed.

Our enduring partnerships with thousands of retailers is the result of our excellent customer service and knowledgeable sales staff which has enabled us to serve countless women over the years.

With 68 years of history, many milestones have been recognized at Henry Margu with many more still to come. Most importantly, the driving force of our efforts is for one purpose ... the satisfaction of our customers!

Front cover: Ava in color 131H.

Back cover: Peyton in color 626H.



Henry Margu in 1976 as shown in a publication commemorating the 25th anniversary of Henry Margu, Inc.

In today's world, when a woman's hair looks good, she feels good. Henry Margu is helping women exude beauty and confidence with a countless variety of fashion forward and elegant styles available in a wide range of our exclusive salon inspired colors.

The superior craftsmanship of Henry Margu wigs utilizes sophisticated techniques including specialized fiber processing and blending methods making our styles more manageable and natural looking. Our design team is constantly working to continually create lighter weight wigs with exceptional comfort for endless hours of wearing pleasure.

The beautiful colorations developed by Henry Margu add a touch of realism to any style. Using the most up-to-date coloring trends, the highlighting is designed to accentuate each individual style creating the most natural appearance for every wig.

Henry Margu is creating freedom of choice by enabling every woman to easily achieve any hairstyle and to change her appearance at a moment's notice to look her absolute best.

Browse the following pages and see for yourself why the difference is beautiful™ with Henry Margu wigs.

Henry Margu ... The Difference is Beautiful!™

Style shown: Jules in color 8/27/33H





Danielle

Ref#: 2409

Color shown: 626H

Colors: 1BH, 4H, 5H, 6H, 7H, 8H, 8/14H, 8/27/33H, 12AH, 12H, 14H, 16H, 24H18, 26H, 27AH, 27/26H, 31H, 33H, 88H, 130H, 131H, 614H, 626H

Weight: 3.25 ounces

Bang: 4½" Eartab: 7" Nape: 7"

Top: 3½ - 6¼" Sides: 6¼ - 7¾" Back: 5½ - 7¾"

Overall: 14½"



Jessica

Ref#: 2485

Color shown: 8/14H

Colors: 1BH, 4H, 5H, 6H, 7H, 8H, 8/14H, 8/27/33H, 12AH, 12H, 14H, 16H, 24H18, 26H, 27AH, 31H, 33H, 37, 38, 43, 44, 51, 56, 60, 88H, 130H, 614H

Weight: 1.95 ounces

Bang: 2¾" Eartab: 2¼" Nape: 1¾"

Top: 1¾ - 3¼" Sides: 2¼ - 2¾" Back: 1¾ - 2¾"





Emily

Ref#: 2503

Color shown: 37

Colors: 1BH, 4H, 5H, 6H, 7H, 8H, 8/14H, 8/27/33H, 12AH, 12H, 14H, 16H, 24H18, 26H, 27AH, 27/26H, 31H, 33H, 37, 38H, 43, 44H, 51H, 56, 60H, 88H, 130H, 614H

Weight: 1.75 ounces

Bang: 3½" Eartab: 3" Nape: 2"

Top: 2 - 3½" Sides: 2 - 3" Back: 2 - 3"



Holly

Ref#: 2445

Color shown: 14H

Colors: 1BH, 4GR, 4H, 5H, 6H, 7H, 8H, 8/14H, 8/27/33H, 12AH, 12H, 14H, 16H, 24H18, 26GR, 26H, 27AH, 27/26H, 31H, 33H, 37, 38, 43, 44, 51, 56, 60, 88GR, 88H, 130H, 131GR, 614GR, 614H, 626H

Weight: 2.75 ounces

Bang: 5½" Eartab: 5" Nape: 2"

Top: 8" Sides: 5½" Back: 5"

Overall: 9½"





Elena

Ref#: 2501

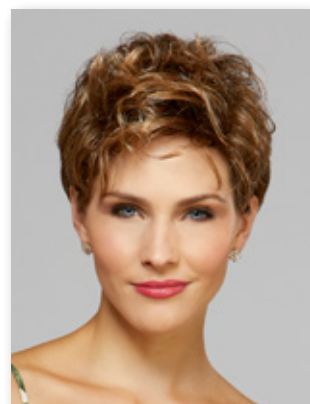
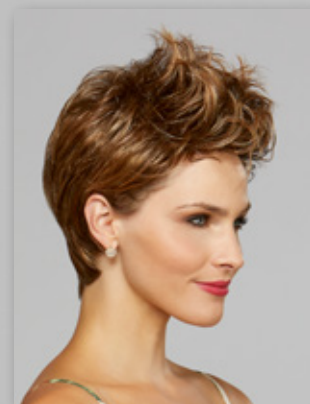
Color shown: 8/27/33H

Colors: 1BH, 4H, 5H, 6H, 7H, 8H, 8/14H, 8/27/33H, 12AH, 12H, 14H, 16H, 24H18, 26H, 27AH, 27/26H, 31H, 33H, 37, 38H, 43, 44H, 51H, 56, 60H, 88H, 130H, 614H

Weight: 2.00 ounces

Bang: 4" Eartab: 3½" Nape: 2½"

Top: 2¾ - 4" Sides: 2½ - 4" Back: 2½ - 4"



Felicia

Ref#: 2452

Color shown: 8/14H

Colors: 1BH, 4GR, 4H, 5H, 6H, 7H, 8H, 8/14H, 8/27/33H, 12AH, 12H, 14H, 16H, 24H18, 26GR, 26H, 27AH, 27/26H, 31H, 33H, 88H, 130H, 131GR, 614GR, 614H, 626H

Weight: 4.20 ounces

Bang: 5" Eartab: 9" Nape: 7"

Top: 6 - 9" Sides: 8 - 9" Back: 7 - 9"

Overall: 13"





AUDREY



BAILEY



ELLA



Audrey

Ref#: 2430
Color shown: 614H

Colors: 1BH, 4GR, 4H, 5H, 6H, 7H, 8H, 8/14H, 8/27/33H, 12AH, 12H, 14H, 16H, 24H18, 26GR, 26H, 27AH, 27/26H, 31H, 33H, 37, 38H, 43, 44H, 51H, 56, 60H, 88GR, 88H, 130H, 131GR, 614GR, 614H

Weight: 2.25 ounces
Bang: 4½" Eartab: 3" Nape: 2"
Top: 4½ - 6" Sides: 2 - 3" Back: 2 - 5½"



Bailey

Ref#: 2439
Color shown: 8/27/33H

Colors: 1BH, 4GR, 4H, 5H, 6H, 7H, 8H, 8/14H, 8/27/33H, 12AH, 12H, 14H, 16H, 24H18, 26GR, 26H, 27AH, 27/26H, 31H, 33H, 37, 38H, 43, 44H, 51H, 56, 60H, 88GR, 88H, 130H, 131GR, 614GR, 614H

Weight: 2.25 ounces
Bang: 4¼" Eartab: 3½" Nape: 3"
Top: 3¾" Sides: 3 - 3½" Back: 3 - 3½"



Ella

Ref#: 2453
Color shown: 8/27/33H

Colors: 1BH, 4GR, 4H, 5H, 6H, 7H, 8H, 8/14H, 8/27/33H, 12AH, 12H, 14H, 16H, 24H18, 26GR, 26H, 27AH, 27/26H, 31H, 33H, 88H, 130H, 131GR, 614GR, 614H, 626H

Weight: 2.90 ounces
Bang: 4" Eartab: 5½" Nape: 3"
Top: 4 - 7" Sides: 5½" Back: 4 - 5½"
Overall: 9½"



Marnie

Ref#: 2500

Color shown: 14H

Colors: 1BH, 4GR, 4H, 5H, 6H, 7H, 8H, 8/14H, 8/27/33H, 12AH, 12H, 14H, 16H, 24H18, 26GR, 26H, 27AH, 27/26H, 31H, 33H, 37, 38, 43, 44, 51, 56, 60, 88GR, 88H, 130H, 131GR, 614GR, 614H

Weight: 1.75 ounces

Bang: 4" Eartab: 3½" Nape: 2¾"

Top: 2¾ - 4" Sides: 2½ - 3½" Back: 2½ - 3½"



Chloe

Ref#: 2434

Color shown: 8H

Colors: 1BH, 4GR, 4H, 5H, 6H, 7H, 8H, 8/14H, 8/27/33H, 12AH, 12H, 14H, 16H, 24H18, 26GR, 26H, 27AH, 27/26H, 31H, 33H, 88GR, 88H, 130H, 131GR, 614GR, 614H, 626H

Weight: 2.35 ounces

Bang: 4¾" Eartab: 4" Nape: 5"

Top: 4¾ - 5¼" Sides: 3½ - 5" Back: 3½ - 4"

Overall: 13"





Nikki

Ref#: 2393

Color shown: 626H

Colors: 1BH, 4GR, 4H, 5H, 6H, 7H, 8H, 8/14H, 8/27/33H, 12AH, 12H, 14H, 16H, 24H18, 26GR, 26H, 27AH, 27/26H, 31H, 33H, 37, 38, 43, 44, 51, 56, 60, 88GR, 88H, 130H, 131GR, 614GR, 614H, 626H

Weight: 2.25 ounces

Bang: 4½" Eartab: 4½" Nape: 4½"

Top: 3½ - 5½" Sides: 4 - 5" Back: 4 - 5"

Overall: 12½"



Annette

Ref#: 2369

Color shown: 24H18

Colors: 1BH, 4GR, 4H, 5H, 6H, 7H, 8H, 8/14H, 8/27/33H, 12AH, 12H, 14H, 16H, 24H18, 26GR, 26H, 27AH, 27/26H, 31H, 33H, 37, 38H, 43, 44H, 51H, 56, 60H, 88GR, 88H, 130H, 131GR, 614GR, 614H

Weight: 1.95 ounces

Bang: 3½" Eartab: 2½" Nape: 2"

Top: 2½ - 5" Sides: 2½ - 3" Back: 2 - 3½"





Kayla

Ref#: 2351

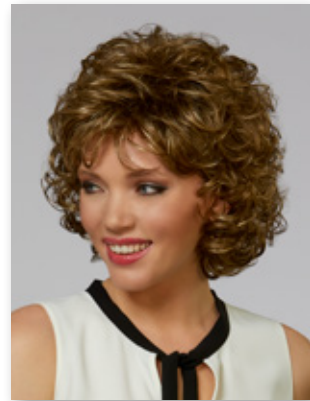
Color shown: 12H

Colors: 1BH, 4H, 5H, 6H, 7H, 8H, 8/14H, 8/27/33H, 12AH, 12H, 14H, 16H, 24H18, 26H, 27AH, 27/26H, 31H, 33H, 37, 38, 43, 44, 51, 56, 60, 88H, 130H, 131H, 614H, 626H

Weight: 2.95 ounces

Bang: 4" Eartab: 5" Nape: 5"

Top: 4 - 4½" Sides: 4½ - 5½" Back: 4½ - 5½"



Gabby

Ref#: 2450

Color shown: 29H

Colors: 1BH, 4GR, 4H, 5H, 6H, 7H, 8H, 8/14H, 8/27/33H, 12AH, 12H, 14H, 16H, 24H18, 26GR, 26H, 27AH, 27/26H, 29H, 31H, 33H, 88GR, 88H, 130H, 131GR, 614GR, 614H, 626H

Weight: 2.30 ounces

Bang: 4½" Eartab: 4½" Nape: 3½"

Top: 4 - 5¾" Sides: 3½ - 4½" Back: 3½ - 4½"





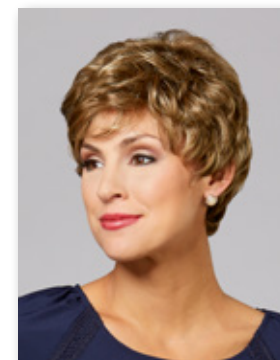
LUCY



AMELIA



RUBY



Lucy

Ref#: 2505
Color shown: 12H

Colors: 1BH, 4H, 5H, 6H, 7H, 8H, 8/14H, 8/27/33H, 12AH, 12H, 14H, 16H, 24H18, 26H, 27AH, 27/26H, 31H, 33H, 37, 38, 43, 44, 51, 56, 60, 88H, 130H, 614H

Weight: 2.00 ounces
Bang: 3¼" Eartab: 2½" Nape: 1¾"
Top: 2¾ - 3¼" Sides: 2¼ - 2¾" Back: 2¼ - 2¾"

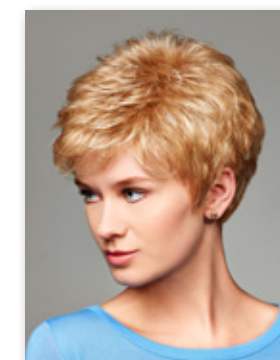
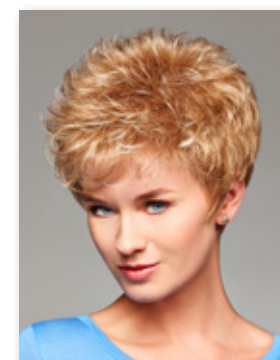


Amelia

Ref#: 2507
Color shown: 26H

Colors: 1BH, 4H, 5H, 6H, 7H, 8H, 8/14H, 8/27/33H, 12AH, 12H, 14H, 16H, 24H18, 26H, 27AH, 27/26H, 31H, 33H, 37, 38, 43, 44, 51, 56, 60, 88H, 130H

Weight: 1.80 ounces
Bang: 3¾" Eartab: 3¼" Nape: 2¾"
Top: 3¾" Sides: 3¼ - 3¾" Back: 3¼ - 3¾"



Ruby

Ref#: 2467
Color shown: 26H

Colors: 1BH, 4H, 5H, 6H, 7H, 8H, 8/14H, 8/27/33H, 12AH, 12H, 14H, 16H, 24H18, 26H, 27AH, 27/26H, 31H, 33H, 37, 38H, 43, 44H, 51H, 56, 60H, 88H, 130H, 614H

Weight: 1.90 ounces
Bang: 3" Eartab: 2½" Nape: 2¼"
Top: 2 - 3" Sides: 2¼ - 2½" Back: 2¼ - 2½"

Petite Average headsize



Bethany

Ref#: 2444

Color shown: 26GR

Colors: 1BH, 4GR, 4H, 5H, 6H, 7H, 8H, 8/14H, 8/27/33H, 12AH, 12H, 14H, 16H, 24H18, 26GR, 26H, 27AH, 27/26H, 31H, 33H, 88GR, 88H, 130H, 131GR, 614GR, 614H, 626H

Weight: 4.05 ounces

Bang: 5" Eartab: 11" Nape: 11½"

Top: 11" Sides: 11" Back: 11"

Overall: 18"



Paige

Ref#: 2482

Color shown: 6H

Colors: 1BH, 4GR, 4H, 5H, 6H, 7H, 8H, 8/14H, 8/27/33H, 12AH, 12H, 14H, 16H, 24H18, 26GR, 26H, 27AH, 27/26H, 31H, 33H, 88H, 130H, 131GR, 614GR, 614H, 626H

Weight: 3.30 ounces

Bang: 3½" Eartab: 7½" Nape: 5"

Top: 3½ - 7½" Sides: 6½ - 7½" Back: 5 - 7½"

Overall: 11"





Piper

Ref#: 2502

Color shown: 14H

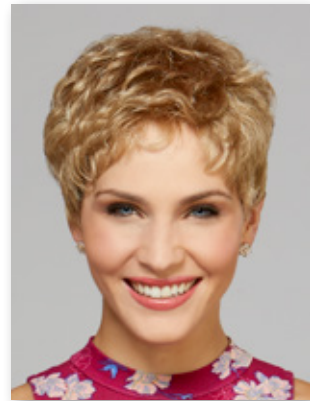
Colors: 1BH, 4H, 5H, 6H, 7H, 8H, 8/14H, 8/27/33H, 12AH, 12H, 14H, 16H, 24H18, 26H, 27AH, 27/26H, 31H, 33H, 37, 38, 43, 44, 51, 56, 60, 88H, 130H, 131H, 614H

Weight: 1.55 ounces

Bang: 2¼" Eartab: 2¼" Nape: 1¾"

Top: 2¼" Sides: 1¾ - 2½" Back: 1¾ - 2¼"

Petite headsize



Amber

Ref#: 2461

Color shown: 7H

Colors: 1BH, 4H, 5H, 6H, 7H, 8H, 8/14H, 8/27/33H, 12AH, 12H, 14H, 16H, 24H18, 26H, 27AH, 27/26H, 31H, 33H, 37, 38, 43, 44, 51, 56, 60, 88H, 130H, 614H

Weight: 2.00 ounces

Bang: 2½" Eartab: 3" Nape: 2"

Top: 2 - 4" Sides: 2 - 3" Back: 2 - 3"





Brenda

Ref#: 2426

Color shown: 24H18

Colors: 1BH, 4GR, 4H, 5H, 6H, 7H, 8H, 8/14H, 8/27/33H, 12AH, 12H, 14H, 16H, 24H18, 26GR, 26H, 27AH, 27/26H, 31H, 33H, 37, 38H, 43, 44H, 51H, 56, 60H, 88GR, 88H, 130H, 131GR, 614GR, 614H

Weight: 2.00 ounces

Bang: 4½" Eartab: 5" Nape: 3½"

Top: 4 - 6" Sides: 3½ - 5" Back: 3½ - 5"

Overall: 11½"

Petite headsize



Jayde

Ref#: 2455

Color shown: 614GR

Colors: 1BH, 4GR, 4H, 5H, 6H, 7H, 8H, 8/14H, 8/27/33H, 12AH, 12H, 14H, 16H, 24H18, 26GR, 26H, 27AH, 27/26H, 31H, 33H, 88H, 130H, 131GR, 614GR, 614H, 626H

Weight: 3.40 ounces

Bang: 4½" Eartab: 6½" Nape: 3"

Top: 9½" Sides: 6 - 8" Back: 2¾ - 8"

Overall: 10½"





SAVANNAH



DELILAH



VANITY



Savannah

Ref#: 2437

Color shown: 27/26H

Colors: 1BH, 4GR, 4H, 5H, 6H, 7H, 8H, 8/14H, 8/27/33H, 12AH, 12H, 14H, 16H, 24H18, 26GR, 26H, 27AH, 27/26H, 31H, 33H, 88GR, 88H, 130H, 131GR, 614GR, 614H, 626H

Weight: 4.00 ounces

Bang: 6" Eartab: 11" Nape: 10"

Top: 5 - 10½" Sides: 9 - 11" Back: 9½ - 11"

Overall: 16"



Delilah

Ref#: 2717

Color shown: 24H18

Colors: 1BH, 4H, 6H, 8H, 12AH, 12H, 14H, 16H, 24H18, 26H, 27AH, 33H, 88H, 130H, 131H, 614H, 2400H

Weight: 7.90 ounces

Bang: 5½" Eartab: 18" Nape: 18"

Top: 5½ - 16" Sides: 12 - 18" Back: 16 - 18"

Overall: 26"



Vanity

Ref#: 2709

Color shown: 2400H

Colors: 1BH, 4H, 6H, 8H, 12AH, 12H, 14H, 16H, 24H18, 26H, 27AH, 33H, 88H, 130H, 131H, 614H, 2400H

Weight: 6.35 ounces

Bang: 5" Eartab: 16" Nape: 18"

Top: 5½ - 14" Sides: 16" Back: 16 - 18"

Overall: 26"



Bonnie

Ref#: 2458

Color shown: 6H

Colors: 1BH, 4H, 5H, 6H, 7H, 8H, 8/14H, 8/27/33H, 12AH, 12H, 14H, 16H, 24H18, 26H, 27AH, 27/26H, 31H, 33H, 37, 38, 43, 44, 51, 56, 60, 88H, 130H, 614H

Weight: 1.65 ounces

Bang: 3½" Eartab: 2½" Nape: 2"

Top: 2 - 3½" Sides: 2 - 2½" Back: 2 - 2½"

Petite Average headsize

Lace front



Jules

Ref#: 2481

Color shown: 26H

Colors: 1BH, 4GR, 4H, 5H, 6H, 7H, 8H, 8/14H, 8/27/33H, 12AH, 12H, 14H, 16H, 24H18, 26GR, 26H, 27AH, 27/26H, 31H, 33H, 88GR, 88H, 130H, 131GR, 614GR, 614H, 626H

Weight: 2.75 ounces

Bang: 7" Eartab: 5½" Nape: 4½"

Top: 3¼ - 7½" Sides: 3¼ - 6½" Back: 4½ - 6½"

Overall: 10"

Lace front





Harper

Ref#: 2472

Color shown: 14H

Colors: 1BH, 4GR, 4H, 5H, 6H, 7H, 8H, 8/14H, 8/27/33H, 12AH, 12H, 14H, 16H, 24H18, 26GR, 26H, 27AH, 27/26H, 31H, 33H, 88GR, 88H, 130H, 131GR, 614GR, 614H, 626H

Weight: 4.70 ounces

Bang: 6½" Eartab: 13½" Nape: 12"

Top: 8½ - 12" Sides: 5 - 13½" Back: 5 - 13½"

Overall: 18"

Lace front



Dylan

Ref#: 2475

Color shown: 24H18

Colors: 1BH, 4GR, 4H, 5H, 6H, 7H, 8H, 8/14H, 8/27/33H, 12AH, 12H, 14H, 16H, 24H18, 26GR, 26H, 27AH, 27/26H, 31H, 33H, 37, 38H, 43, 44H, 51H, 56, 60H, 88GR, 88H, 130H, 131GR, 614GR, 614H

Weight: 2.15 ounces

Bang: 4 - 6" Eartab: 2¼" Nape: 1¾"

Top: 2¼ - 6" Sides: 1¼ - 3¼" Back: 1½ - 3¼"

Lace front



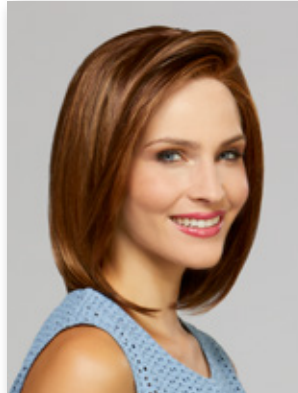


Brooklyn

Ref#: 2480
Color shown: 31H
Colors: 1BH, 4GR, 4H, 5H, 6H, 7H, 8H, 8/14H, 8/27/33H, 12AH, 12H, 14H, 16H, 24H18, 26GR, 26H, 27AH, 27/26H, 31H, 33H, 88GR, 88H, 130H, 131GR, 614GR, 614H

Weight: 3.25 ounces
Bang: 8" Eartab: 8" Nape: 4½"
Top: 12" Sides: 10" Back: 9½"
Overall: 12"

Petite Average headsize
Monofilament part with lace front



Presley

Ref#: 2478
Color shown: 26H
Colors: 1BH, 4GR, 4H, 5H, 6H, 7H, 8H, 8/14H, 8/27/33H, 12AH, 12H, 14H, 16H, 24H18, 26GR, 26H, 27AH, 27/26H, 31H, 33H, 88GR, 88H, 130H, 131GR, 614GR, 614H, 626H

Weight: 4.80 ounces
Bang: 10¼" Eartab: 10¼" Nape: 11¼"
Top: 9 - 13" Sides: 9 - 12" Back: 9 - 12"
Overall: 18½"

Monofilament part with lace front





Faith

Ref#: 2441

Color shown: 8/27/33H

Colors: 1BH, 4GR, 4H, 5H, 6H, 7H, 8H, 8/14H, 8/27/33H, 12AH, 12H, 14H, 16H, 24H18, 26GR, 26H, 27AH, 27/26H, 31H, 33H, 37, 38, 43, 44, 51, 56, 60, 88GR, 88H, 130H, 131GR, 614GR, 614H

Weight: 1.65 ounces

Bang: 3" Eartab: 2½" Nape: 2¼"

Top: 1¾ - 3½" Sides: 2½" Back: 1¾ - 3½"

Petite headsize

Monofilament crown area



Celine

Ref#: 2457

Color shown: 131H

Colors: 1BH, 4H, 5H, 6H, 7H, 8H, 8/14H, 8/27/33H, 12AH, 12H, 14H, 16H, 24H18, 26H, 27AH, 27/26H, 31H, 33H, 88H, 130H, 131H, 614H, 626H

Weight: 5.40 ounces

Bang: 3" Eartab: 15" Nape: 13"

Top: 12 - 17" Sides: 15 - 17" Back: 13 - 17"

Overall: 19"

Monofilament crown area





Tiffany

Ref#: 2473

Color shown: 8H

Colors: 1BH, 4GR, 4H, 5H, 6H, 7H, 8H, 8/14H, 8/27/33H, 12AH, 12H, 14H, 16H, 24H18, 26GR, 26H, 27AH, 27/26H, 31H, 33H, 88GR, 88H, 130H, 131GR, 614GR, 614H, 626H

Weight: 3.75 ounces

Bang: 7" Eartab: 9" Nape: 6½"

Top: 4 - 10½" Sides: 7½ - 9" Back: 6½ - 9"

Overall: 13"

Lace front



Isabelle

Ref#: 4000

Color shown: 27/26H

Colors: 1BH, 4H, 5H, 6H, 7H, 8H, 8/14H, 8/27/33H, 12AH, 12H, 14H, 16H, 24H18, 26H, 27AH, 27/26H, 31H, 33H, 88H, 130H, 131H, 614H, 626H

Weight: 4.05 ounces

Bang: 12½" Eartab: 9" Nape: 5½"

Top: 3 - 14" Sides: 8 - 12" Back: 5½ - 12"

Overall: 15"

Lace front





Naturally Yours®

Experience the best Henry Margu has to offer! It's a new era for today's sophisticated fashion forward women looking for quality, comfort and style. With advancements in production techniques that have allowed for countless improvements in every detail, Henry Margu has created a unique collection of wigs for every lifestyle.

Introducing **Naturally Yours®** ... innovative and artistically hand crafted styles offering exceptional comfort while looking amazingly realistic. Modern in design, the **Naturally Yours** collection offers ready-to-wear styles with a monofilament top that have the versatility to be customized to fit a woman's personal needs. From chic bobs to long, luscious layers, the monofilament top is hand-knotted with individual fibers to simulate realistic hair growth and allowing for multi-directional styling.

For the most discerning consumers that desire only the best, **Naturally Yours Professional** offer a meticulously hand-knotted stretch lace cap with a monofilament top that are uniquely designed to allow for endless hours of wearing pleasure making this collection the most exclusive in the market today.

Browse the following pages to see the variety of luxurious **Naturally Yours** styles that will help every woman radiate beauty and look and feel her best!

For the most natural appearance and the ultimate in comfort ... it's **Naturally Yours®**.

Style shown: Kendall in color 88GR



Taylor

Ref#: 4772
 Color shown: 88GR
 Colors: 1BH, 4GR, 4H, 5H, 6H, 7H, 8H, 8/14H, 8/27/33H, 12AH, 12H, 14H, 16H, 24H18, 26GR, 26H, 27AH, 31H, 33H, 88GR, 88H, 130H, 131GR, 614GR, 614H, 626H

Weight: 3.95 ounces
 Bang: 6" Eartab: 10" Nape: 10"
 Top: 4½ - 10" Sides: 6 - 8¾" Back: 8¾ - 10¾"
 Overall: 15½"

Monofilament top with lace front



Madilyn

Ref#: 4774
 Color shown: 7H
 Colors: 1BH, 4GR, 4H, 5H, 6H, 7H, 8H, 8/14H, 8/27/33H, 12AH, 12H, 14H, 16H, 24H18, 26GR, 26H, 27AH, 31H, 33H, 37, 38, 43, 44, 51, 56, 60, 88GR, 88H, 130H, 131GR, 614GR, 614H

Weight: 2.40 ounces
 Bang: 7¾" Eartab: 5½" Nape: 2"
 Top: 5 - 9" Sides: 3 - 5½" Back: 2 - 5½"
 Overall: 9"

Petite Average headsize
 Monofilament top with lace front





Becky

Ref#: 4739

Color shown: 88H

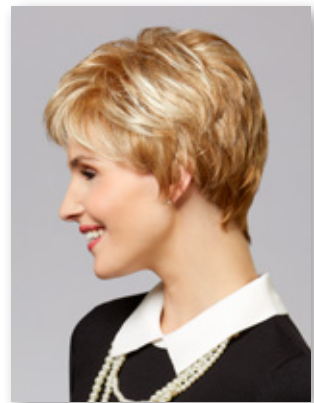
Colors: 1BH, 4H, 5H, 6H, 7H, 8H, 8/14H, 8/27/33H, 12AH, 12H, 14H, 16H, 24H18, 26H, 27AH, 27/26H, 31H, 33H, 37, 38H, 43, 44H, 51H, 56, 60H, 88H, 130H, 614H

Weight: 1.80 ounces

Bang: 4" Eartab: 2¾" Nape: 1¾"

Top: 2 - 3½" Sides: 1¾ - 2¾" Back: 1¾ - 3¼"

Monofilament top



Kelly

Ref#: 4745

Color shown: 27/26H

Colors: 1BH, 4GR, 4H, 5H, 6H, 7H, 8H, 8/14H, 8/27/33H, 12AH, 12H, 14H, 16H, 24H18, 26GR, 26H, 27AH, 27/26H, 31H, 33H, 37, 38H, 43, 44H, 51H, 56, 60H, 88GR, 88H, 130H, 131GR, 614GR, 614H, 626H

Weight: 2.20 ounces

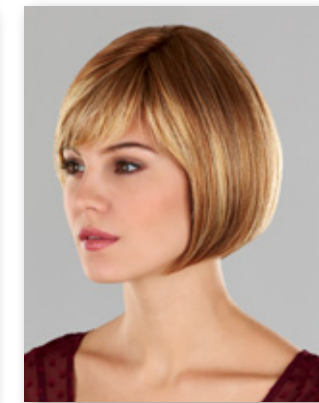
Bang: 4" Eartab: 6½" Nape: 1½"

Top: 3 - 8" Sides: 4 - 6½" Back: 1½ - 6½"

Overall: 8"

Petite Average headsize

Monofilament top





Rachel

Ref#: 4769

Color shown: 26GR

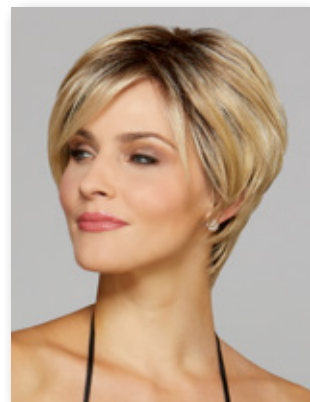
Colors: 1BH, 4GR, 4H, 5H, 6H, 7H, 8H, 8/14H, 8/27/33H, 12AH, 12H, 14H, 16H, 24H18, 26GR, 26H, 27AH, 27/26H, 31H, 33H, 37, 38, 43, 44, 51, 56, 60, 88GR, 88H, 130H, 131GR, 614GR, 614H

Weight: 2.35 ounces

Bang: 6¼" Eartab: 4" Nape: 2¼"

Top: 2¾ - 6½" Sides: 3 - 5" Back: 2½ - 5"

Monofilament top with lace front



Hayden

Ref#: 4763

Color shown: 8/14H

Colors: 1BH, 4GR, 4H, 5H, 6H, 7H, 8H, 8/14H, 8/27/33H, 12AH, 12H, 14H, 16H, 24H18, 26GR, 26H, 27AH, 27/26H, 31H, 33H, 88GR, 88H, 130H, 131GR, 614GR, 614H, 626H

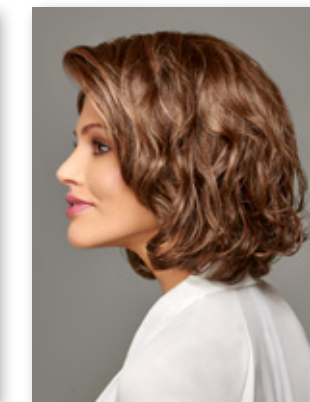
Weight: 3.50 ounces

Bang: 7" Eartab: 9" Nape: 4"

Top: 5 - 10" Sides: 6 - 9" Back: 4 - 9"

Overall: 11½"

Monofilament top with lace front





CHARLOTTE



STELLA



ZOEY



Charlotte

Ref#: 4750
Color shown: 4H

Colors: 1BH, 4H, 5H, 6H, 7H, 8H, 8/14H, 8/27/33H, 12AH, 12H, 14H, 16H, 24H18, 26H, 27AH, 27/26H, 31H, 33H, 37, 38, 43, 44, 51, 56, 60, 88H, 130H, 614H

Weight: 1.95 ounces
Bang: 3½" Eartab: 3" Nape: 3"
Top: 2½ - 4" Sides: 2¼ - 3" Back: 2¼ - 3"

Monofilament top with lace front



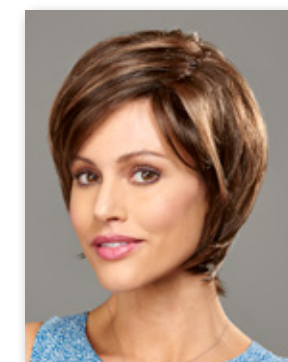
Stella

Ref#: 4800
Color shown: 12H

Colors: 1BH, 4GR, 4H, 5H, 6H, 7H, 8H, 8/14H, 8/27/33H, 12AH, 12H, 14H, 16H, 24H18, 26GR, 26H, 27AH, 27/26H, 31H, 33H, 37, 38, 43, 44, 51, 56, 60, 88GR, 88H, 130H, 131GR, 614GR, 614H

Weight: 2.05 ounces
Bang: 4" Eartab: 3½" Nape: 2¾"
Top: 4" Sides: 2½ - 3½" Back: 2½ - 3½"

Monofilament top



Zoey

Ref#: 4767
Color shown: 7H

Colors: 1BH, 4GR, 4H, 5H, 6H, 7H, 8H, 8/14H, 8/27/33H, 12AH, 12H, 14H, 16H, 24H18, 26GR, 26H, 27AH, 27/26H, 31H, 33H, 37, 38H, 43, 44H, 51H, 56, 60H, 88GR, 88H, 130H, 131GR, 614GR, 614H

Weight: 2.25 ounces
Bang: 4¼" Eartab: 4¾" Nape: 3½"
Top: 4 - 6" Sides: 4 - 5" Back: 3½ - 4"
Overall: 10¼"

Monofilament top with lace front



Fiona

Ref#: 4749

Color shown: 88GR

Colors: 1BH, 4GR, 4H, 5H, 6H, 7H, 8H, 8/14H, 8/27/33H, 12AH, 12H, 14H, 16H, 24H18, 26GR, 26H, 27AH, 27/26H, 31H, 33H, 88GR, 88H, 13OH, 131GR, 614GR, 614H, 626H

Weight: 3.30 ounces

Bang: 7" Eartab: 8½" Nape: 6"

Top: 5¼ - 9" Sides: 7½ - 8½" Back: 6 - 8½"

Overall: 13"

Monofilament top with lace front



Grace

Ref#: 4753

Color shown: 43

Colors: 1BH, 4H, 5H, 6H, 7H, 8H, 8/14H, 8/27/33H, 12AH, 12H, 14H, 16H, 24H18, 26H, 27AH, 27/26H, 31H, 33H, 37, 38H, 43, 44H, 51H, 56, 60H, 88H, 130H, 614H

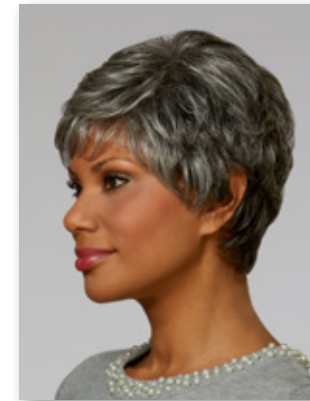
Weight: 1.75 ounces

Bang: 2 - 3" Eartab: 2½" Nape: 2¼"

Top: 2 - 3" Sides: 2¼ - 2½" Back: 2¼ - 2½"

Petite Average headsize

Monofilament top with lace front





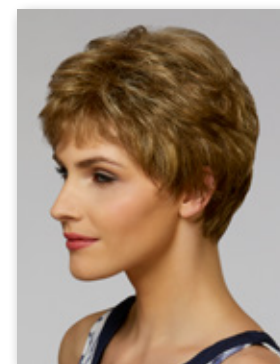
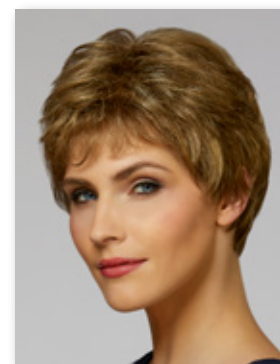
MONICA



SABRINA



GIANNA



Monica

Ref#: 4751

Color shown: 12H

Colors: 1BH, 4H, 5H, 6H, 7H, 8H, 8/14H, 8/27/33H, 12AH, 12H, 14H, 16H, 24H18, 26H, 27AH, 27/26H, 31H, 33H, 37, 38, 43, 44, 51, 56, 60, 88H, 130H, 614H

Weight: 1.80 ounces

Bang: 2¾" Eartab: 2¼" Nape: 1¾"

Top: 2 - 3¼" Sides: 2¼ - 2¾" Back: 1¼ - 2¾"

Petite Average headsize

Monofilament top with lace front



Sabrina

Ref#: 4731

Color shown: 6H

Colors: 1BH, 4H, 5H, 6H, 7H, 8H, 8/14H, 8/27/33H, 12AH, 12H, 14H, 16H, 24H18, 26H, 27AH, 27/26H, 31H, 33H, 37, 38H, 43, 44H, 51H, 56, 60H, 88H, 130H, 614H

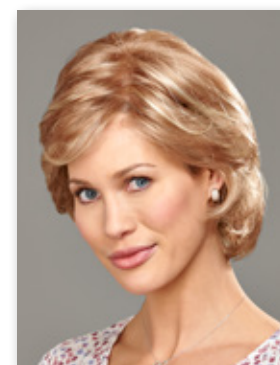
Weight: 1.80 ounces

Bang: 3½" Eartab: 4" Nape: 2½"

Top: 2¾ - 4¾" Sides: 2½ - 4" Back: 2½ - 4"

Petite headsize

Monofilament top



Gianna

Ref#: 4766

Color shown: 14H

Colors: 1BH, 4GR, 4H, 5H, 6H, 7H, 8H, 8/14H, 8/27/33H, 12AH, 12H, 14H, 16H, 24H18, 26GR, 26H, 27AH, 27/26H, 31H, 33H, 37, 38, 43, 44, 51, 56, 60, 88GR, 88H, 130H, 131GR, 614GR, 614H

Weight: 2.40 ounces

Bang: 4" Eartab: 4¼" Nape: 4½"

Top: 3½ - 5½" Sides: 4 - 4½" Back: 4½ - 5"

Overall: 10"

Monofilament top with lace front



Kendall

Ref#: 4758

Color shown: 7H

Colors: 1BH, 4GR, 4H, 5H, 6H, 7H, 8H, 8/14H, 8/27/33H, 12AH, 12H, 14H, 16H, 24H18, 26GR, 26H, 27AH, 27/26H, 31H, 33H, 88GR, 88H, 130H, 131GR, 614GR, 614H, 626H

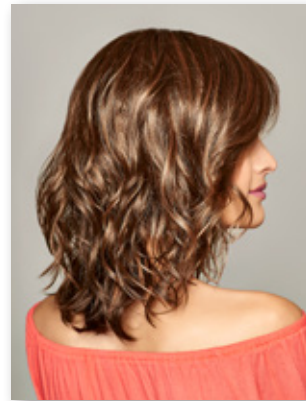
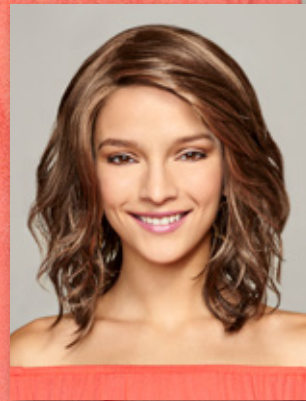
Weight: 3.55 ounces

Bang: 7" Eartab: 10" Nape: 8"

Top: 7 -11" Sides: 8 - 10" Back: 8 - 10"

Overall: 14½"

Monofilament top with lace front



Farrah

Ref#: 4756

Color shown: 27AH

Colors: 1BH, 4GR, 4H, 5H, 6H, 7H, 8H, 8/14H, 8/27/33H, 12AH, 12H, 14H, 16H, 24H18, 26GR, 26H, 27AH, 27/26H, 31H, 33H, 37, 38, 43, 44, 51, 56, 60, 88GR, 88H, 130H, 131GR, 614GR, 614H, 626H

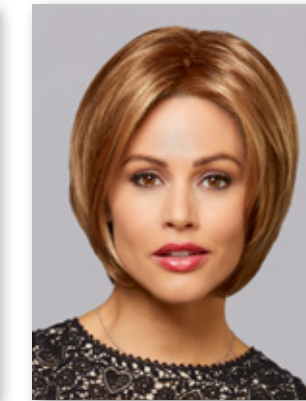
Weight: 2.35 ounces

Bang: 5½" Eartab: 6½" Nape: 2½"

Top: 3½ - 6 ½" Sides: 4½ - 6½" Back: 2½ - 6½"

Overall: 9"

Monofilament top with lace front





Athena

Ref#: 4754

Color shown: 31H & 51H

Colors: 1BH, 4GR, 4H, 5H, 6H, 7H, 8H, 8/14H, 8/27/33H, 12AH, 12H, 14H, 16H, 24H18, 26GR, 26H, 27AH, 27/26H, 31H, 33H, 38, 44, 51, 56, 60, 88GR, 88H, 130H, 131GR, 614GR, 614H, 626H

Weight: 3.75 ounces

Bang: 6" Eartab: 9" Nape: 9"

Top: 6 - 12½" Sides: 7 - 13" Back: 9 - 13"

Overall: 15"

Monofilament top with lace front



Ava

Ref#: 4742

Color shown: 5H

Colors: 1BH, 4H, 5H, 6H, 7H, 8H, 8/14H, 8/27/33H, 12AH, 12H, 14H, 16H, 24H18, 26H, 27AH, 27/26H, 31H, 33H, 88H, 130H, 131H, 614H, 626H

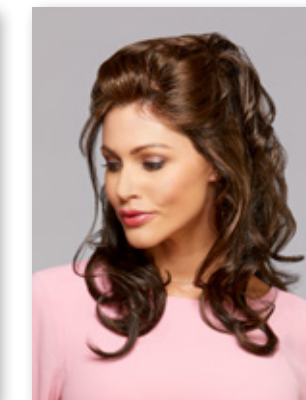
Weight: 5.65 ounces

Bang: 11½" Eartab: 11½" Nape: 15½"

Top: 11¼ - 11¾" Sides: 11½ - 14½" Back: 12½ - 15½"

Overall: 20"

Monofilament top with full lace front





Scarlet

Ref#: 4770

Color shown: 14H

Colors: 1BH, 4GR, 4H, 5H, 6H, 7H, 8H, 8/14H, 8/27/33H, 12AH, 12H, 14H, 16H, 24H18, 26GR, 26H, 27AH, 27/26H, 31H, 33H, 88GR, 88H, 130H, 131GR, 614GR, 614H

Weight: 4.30 ounces

Bang: 7" Eartab: 8½" Nape: 8½"

Top: 11" Sides: 11" Back: 11"

Overall: 15"

Monofilament top with lace front



Peyton

Ref#: 4761

Color shown: 31H

Colors: 1BH, 4GR, 4H, 5H, 6H, 7H, 8H, 8/14H, 8/27/33H, 12AH, 12H, 14H, 16H, 24H18, 26GR, 26H, 27AH, 27/26H, 31H, 33H, 88GR, 88H, 130H, 131GR, 614GR, 614H, 626H

Weight: 3.00 ounces

Bang: 7" Eartab: 7" Nape: 4"

Top: 5 - 8½" Sides: 4 - 7" Back: 4 - 7"

Overall: 10½"

Monofilament top with lace front





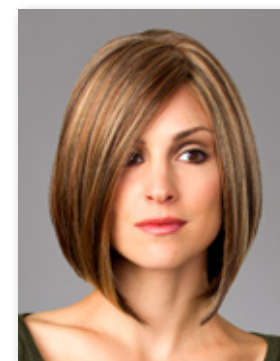
NORA



LORI



TRISH



Nora

Ref#: 4515

Color shown: 8/27/33H

Colors: 1BH, 4H, 5H, 6H, 7H, 8H, 8/14H, 8/27/33H, 12AH, 12H, 14H, 16H, 24H18, 26H, 27AH, 27/26H, 31H, 33H, 37, 38, 43, 44, 51, 56, 60, 88H, 130H, 614H, 626H

Weight: 3.15 ounces

Bang: 10 - 10¼" Eartab: 6½" Nape: 2½"

Top: 6½ - 9¼" Sides: 6½ - 8¼" Back: 8 - 8¼"

Overall: 11¾"

100% hand-knotted stretch cap with monofilament top with lace front
Medical application on eartabs



Lori

Ref#: 4514

Color shown: 33H

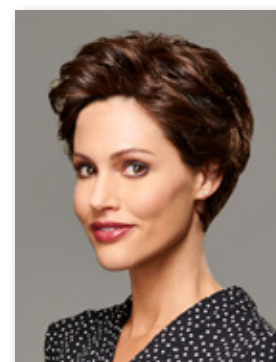
Colors: 1BH, 4H, 5H, 6H, 7H, 8H, 8/14H, 8/27/33H, 12AH, 12H, 14H, 16H, 24H18, 26H, 27AH, 27/26H, 31H, 33H, 37, 38, 43, 44, 51, 56, 60, 88H, 130H, 131H, 614H

Weight: 1.65 ounces

Bang: 2½" Eartab: 2½" Nape: 2¼"

Top: 2½ - 3" Sides: 2¼ - 2¾" Back: 2¼ - 2¾"

Petite Average headsize
Monofilament top with lace front



Trish

Ref#: 4513

Color shown: 5H

Colors: 1BH, 4H, 5H, 6H, 7H, 8H, 8/14H, 8/27/33H, 12AH, 12H, 14H, 16H, 24H18, 26H, 27AH, 27/26H, 31H, 33H, 37, 38, 43, 44, 51, 56, 60, 88H, 130H, 131H, 614H

Weight: 1.75 ounces

Bang: 3" Eartab: 2½" Nape: 2½"

Top: 2½ - 3" Sides: 2½ - 3" Back: 2½ - 3"

Petite Average headsize
Monofilament top with lace front



Mystique

Ref#: 4523

Color shown: 26GR

Colors: 1BH, 4GR, 4H, 5H, 6H, 7H, 8H, 8/14H, 8/27/33H, 12AH, 12H, 14H, 16H, 24H18, 26GR, 26H, 27AH, 31H, 33H, 44, 51, 56, 60, 88GR, 88H, 130H, 131GR, 614GR, 614H, 626H

Weight: 4.10 ounces

Bang: 6½" Eartab: 9" Nape: 7"

Top: 10¼" Sides: 9 - 10" Back: 7½ - 10"

Overall: 14"

Petite Average headsize

100% hand-knotted stretch cap with monofilament top with lace front

Medical application on front hairline and eartabs



Chic

Ref#: 4522

Color shown: 8/27/33H

Colors: 1BH, 4GR, 4H, 5H, 6H, 7H, 8H, 8/14H, 8/27/33H, 12AH, 12H, 14H, 16H, 24H18, 26GR, 26H, 27AH, 31H, 33H, 37, 38, 43, 44, 51, 56, 60, 88GR, 88H, 130H, 131GR, 614GR, 614H, 626H

Weight: 3.30 ounces

Bang: 8½" Eartab: 6½" Nape: 3"

Top: 8½" Sides: 6½ - 7½" Back: 3 - 7½"

Overall: 10"

100% hand-knotted stretch cap with monofilament top with lace front

Medical application on front hairline and eartabs





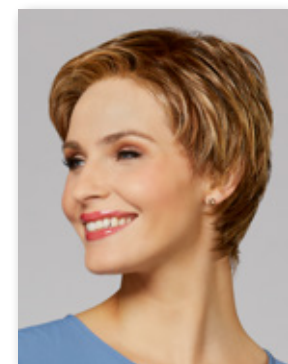
SKYLAR



VIOLET



VISAGE



Skylar

Ref#: 4519

Color shown: 8/27/33H

Colors: 1BH, 4H, 5H, 6H, 7H, 8H, 8/14H, 8/27/33H, 12AH, 12H, 14H, 16H, 24H18, 26H, 27AH, 27/26H, 31H, 33H, 37, 38, 43, 44, 51, 56, 60, 88H, 130H

Weight: 1.70 ounces

Bang: 2½" Eartab: 2½" Nape: 2"

Top: 2¼ - 3¾" Sides: 2¼ - 3¼" Back: 1¼ - 3¾"

Petite Average headsize

Monofilament top with lace front



Violet

Ref#: 4516

Color shown: 8/27/33H

Colors: 1BH, 4H, 5H, 6H, 7H, 8H, 8/14H, 8/27/33H, 12AH, 12H, 14H, 16H, 24H18, 26H, 27AH, 27/26H, 31H, 33H, 88H, 130H, 614H, 626H

Weight: 6.15 ounces

Bang: 13 - 15" Eartab: 15 - 17" Nape: 15"

Top: 15 - 17" Sides: 15 - 17" Back: 15 - 17"

Overall: 24"

100% hand-knotted stretch cap with monofilament top with lace front

Medical application on eartabs



Visage

Ref#: 4512

Color shown: 626H

Colors: 1BH, 4H, 5H, 6H, 7H, 8H, 8/14H, 8/27/33H, 12AH, 12H, 14H, 16H, 24H18, 26H, 27AH, 27/26H, 31H, 33H, 88H, 130H, 131H, 614H, 626H

Weight: 4.55 ounces

Bang: 9½" Eartab: 10" Nape: 11"

Top: 6½ - 10" Sides: 10" Back: 10 - 11"

Overall: 17½"

100% hand-knotted stretch cap with monofilament top

Medical application on front hairline and eartabs

Hair Accents®

Designed for comfort, Hair Accents® beautifully blended hair is permanently attached to a 100% cotton baseball cap creating a ready-to-wear hair fashion alternative with absolutely no styling needed. All Hair Accents styles are available in 12 naturally highlighted colors in both a black and beige colored baseball cap.



Classic Hat Black

Ref#: 8226
Color shown: 12H
Length: 8"



Classic Hat Beige

Ref#: 8228
Color shown: 16H
Length: 8"



Long Hat Beige

Ref#: 8229
Color shown: 6H
Length: 14"



Long Hat Black

Ref#: 8227
Color shown: 30H
Length: 14"

Classic Hat, Long Hat, Shorty Hat, & Curly Hat are available in colors: 1BH, 4H, 6H, 8H, 12AH, 12H, 14H, 16H, 24H18, 27AH, 30H, 614H

Shorty Hat also available in colors: 38, 44, 51, & 60



Shorty Hat Black

Ref#: 8225
Color shown: 14H
Length: 5½"



Shorty Hat Beige

Ref#: 8230
Color shown: 27AH
Length: 5½"



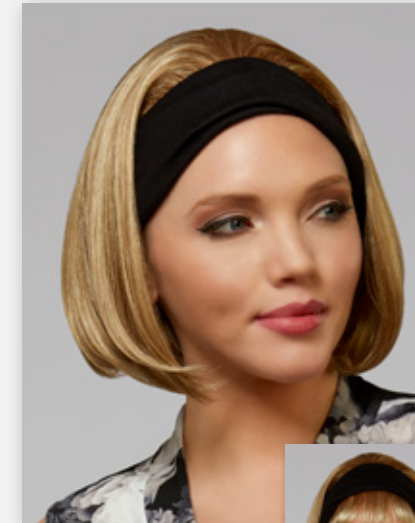
Curly Hat Black

Ref#: 8249
Color shown: 27AH
Length: 9"



Cap size adjustment to easily and comfortably fit all head sizes.

Bands & Bangs



Classic Band

Ref#: 2323
Color shown: 14H
Weight: 3.55 ounces
Overall length: 14"
2½ inch permanently attached black headband
Inset shown with 228 Bang



Bang

Ref#: 228 Overall length: 3½ - 4½"

Velcro strip with adhesive backing.
Simply peel paper and attach adhesive to Band style or hat.
Soft velvet material on opposite side.



Classic Band & Bang available in colors: 1BH, 4H, 6H, 7H, 8H, 8/27/33H, 12AH, 12H, 14H, 16H, 24H18, 26H, 27AH, 27/26H, 33H, 38, 44, 51, 56, 60, 130H, 131H, 614H

Hairpieces



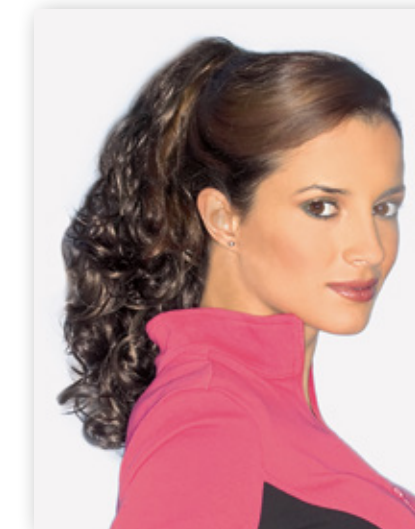
Temptation

Ref#: 8224
Color shown: 88H
Overall length: 24"
Quick Combs® butterfly comb hairpiece



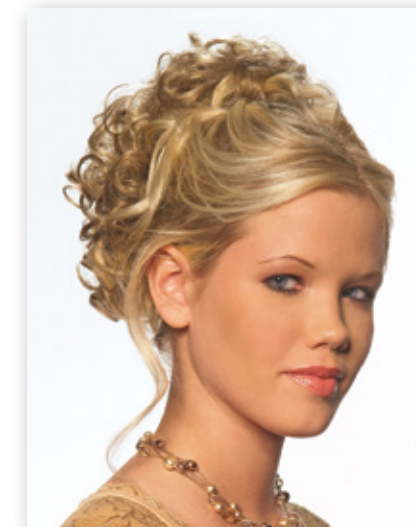
Charm

Ref#: 8220
Color shown: 88H
Overall length: 7"
Quick Combs® butterfly comb hairpiece



Whirlwind

Ref#: 8223
Color shown: 8H
Overall length: 15 - 16"
Quick Combs® butterfly comb hairpiece



Sassy

Ref#: 8213
Color shown: 26H
Overall length: 8½"
Quick Combs® interlocking comb hairpiece



Breezy

Ref#: 8089
Color shown: 12AH
Overall length: 24"
¾ cap hairpiece

Temptation, Charm, Whirlwind & Sassy are available in colors: 1BH, 4H, 6H, 8H, 12H, 14H, 16H, 24H18, 26H, 33H, 88H, 614H

Sassy & Charm also available in colors: 38, 51, 56 & 60

Breezy is available in colors: 1BH, 4H, 6H, 8H, 12AH, 14H, 16H, 24H18, 26H, 33H, 88H, 131H, 614H, 2500H

Halos

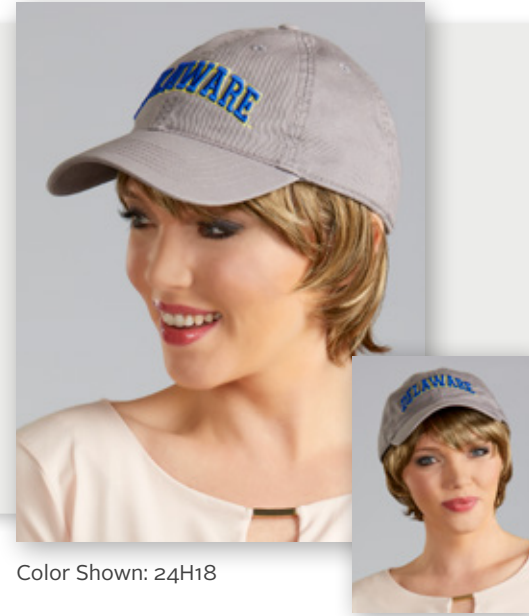
by Henry Margu

Halo is created with comfort in mind while offering a simple solution to hair loss. Ready-to-wear with no styling needed, Halo is a fast and easy option to a wig when running errands, dropping the kids at school or a trip to the grocery store.

Halo is a realistic wig alternative creating the illusion of a full head of hair. Comfortably fitting the circumference of the head, three silicone patches in the front and ultra-thin adjustments in the back personalize the fit and assist in securing Halo to the head.

Halo

Ref #: 8255
Color Shown: 12H
Weight: 1.05 ounces
Bang: 5¼" Sides: 5¼" Back: 4½"



Color Shown: 24H18



Color Shown: 51



Color Shown: 27AH

Halo Long

Ref #: 8256
Color Shown: 26H
Weight: 2.75 ounces
Bang: 6¼" Sides: 13" Back: 13¼"



Color Shown: 26H




Color Shown: 31H

Pairing perfectly with a hat, scarf, turban and most baseball caps, Halo is exceptionally lightweight and available in two lengths; a short chin length and a below the shoulder version. Beautifully highlighted colors assure a close to match to any hair color.

When a wig is a hassle, just slip on Halo for a beautiful, believable new look.

Headwear not included!

 **Halo and Halo Long are available in colors:** 1BH, 4H, 6H, 7H, 8H, 12H, 14H, 24H18, 26H, 27AH, 31H, 33H, 51, 60

Accessories



Color Ring
Individual fiber swatches aid in choosing the most suitable color for your clients.

Accessory Mannequins

Enhancing the presentation of wigs and hairpieces, Shelby (17") and Alexa (25") have a natural skin tone and soft makeup to accentuate any hair color. Produced in a unique flexible PVC material that will resist scratching and chipping, these accessory heads will keep your display looking amazing for many years to come.



Alexa



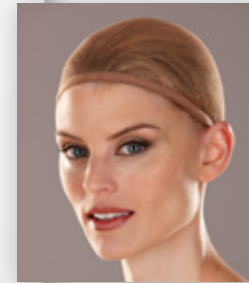
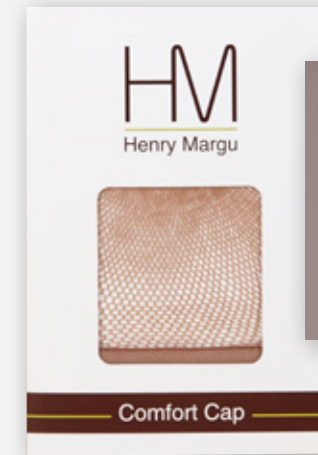
Shelby



Wig Care Products

Cleanse, Finish, Revitalize & Shape are specifically formulated to enhance and prolong the life of our exceptional wigs and hairpieces.

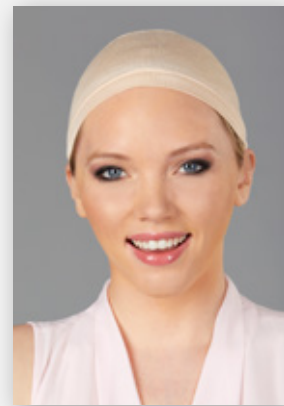
Henry Margu wig care products are available in cases of 12 eight ounce bottles.



Comfort Cap

Mesh wig liner designed to keep the wearer cool and comfortable while preventing movement and slipping for a more secure fit.

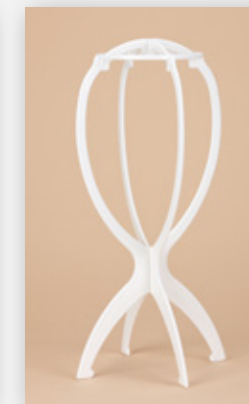
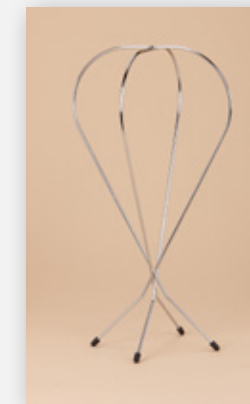
Available in Black, Light Brown, Beige & Grey and packaged a dozen per color.



Bamboo Caps

Exceptionally absorbent, breathable and ultra-soft, our Bamboo Cap is incredibly cool and comfortable to wear. Hypo-allergenic with natural antibacterial properties makes it resistant to odor and bacteria.

Available in Beige, Black, & Brown.



Wig Stands

Folding wig stands are ideal for storing and/or drying wigs. Made of sturdy plastic or metal, these convenient stands are easy to assemble and lay flat for traveling ease.

Cap Construction



Traditional

Traditional cap construction features a fine net material in the top area with an open cap in the back. Weftings attached to stretch elastic lace make the open back creating better ventilation to keep the head cooler. A Traditional cap or a wig utilizing components of this type of cap construction is often referred to as a “machine-made” cap.



Open Cap/Featherlight

Open cap is commonly referred to as a “capless” wig due to the lack of net material used in the top as on a Traditional cap and as a result making the wig better ventilated throughout. The entire cap is produced with weftings attached to thin stretch elastic lace. Our exclusive ultra thin weftings used in the Featherlight cap create super lightweight wigs that are exceptionally cool and comfortable to wear.



Lace Front

A lace front wig has a hairline made of a fine lace mesh in which each hair is individually hand knotted. The lace varies in width from ¼ to 1½ inches. The lace typically extends across the entire front hairline but on occasion may extend from ear to ear. The benefit of a lace front wig is an amazingly realistic hairline that appears as if the hair is growing directly out of the scalp and allows the fiber in front to be styled off the face in any direction. The neutral color of the lace mesh takes on the skin tone of the wearer making the hairline more natural looking and virtually invisible. A Lace Front can be utilized on wigs of any type cap construction.



Hand Knotted

A Hand-Knotted wig is also referred to as a Hand-Tied wig. Hand-Tied wigs are made with a soft stretch lace base and 100% of the fiber is individually hand knotted onto the lace base. This type of cap is lightweight and exceptionally comfortable as the lace feels soft against the head. Hand-Tied wigs are produced with a Mono Top making them extremely natural looking as well and making this type of wig the most luxurious available.



Monofilament Top

Monofilament (Mono) is an extremely sheer mesh used to make a transparent base that creates a realistic looking scalp area and is then hand-knotted with individual fibers to simulate the appearance of natural hair growth. The fiber in a Monofilament Top (Mono Top) allows for multidirectional styling and parting the hair on the left, right or center creating amazing styling versatility and resulting in an extremely natural looking appearance. A Mono Top feels

smoother against the scalp than a Traditional or Open Cap and more comfortable as a result. Often a Mono Top will have a polyurethane strip in the front of the mono area to help create a more secure fit.



Monofilament Top with Lace Front

Mono Top with Lace Front wigs are produced the same as a Mono Top wig but utilizing a Lace Front as well to create the most natural front hairline in conjunction with the realistic characteristics of a Mono Top. This allows for amazing off the face styling versatility as well as the flexibility to part hair on the left or right or in the center to achieve multiple styling variations. These wigs offer the most natural and realistic appearance due to the combination of the Mono and Lace Front.



Monofilament Part

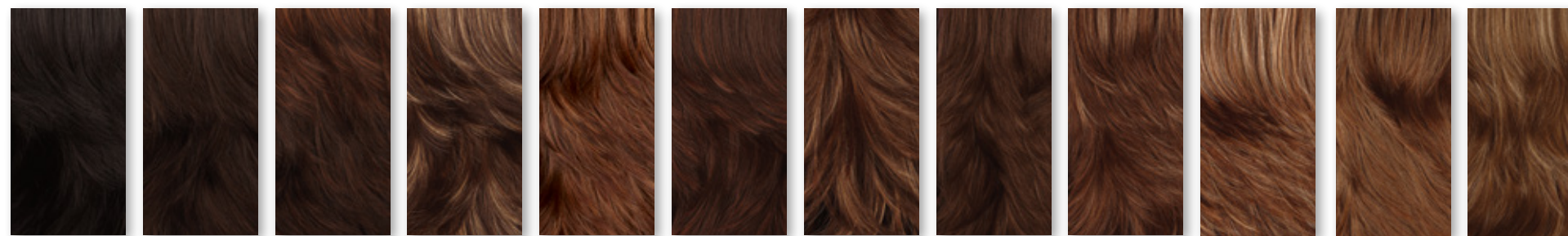
A Monofilament Part (Mono Part) cap contains a wide Mono Part area on a machine-made cap and allows the wearer to style a conventional part or a more fashionable zigzag part for the most realistic appearance.



Monofilament Crown

A Monofilament Crown (Mono Crown) cap contains a Mono area in the top area of a machine-made cap. This allows for the fiber in this area to have a more natural and realistic appearance and is often used on shorter wig styles in the crown or in the center area of a style that is flatter and with less volume in the top.

Color Swatches



1BH 4H 5H 626H 31H 6H 7H 8H 8/14H 8/27/33H 12AH 12H

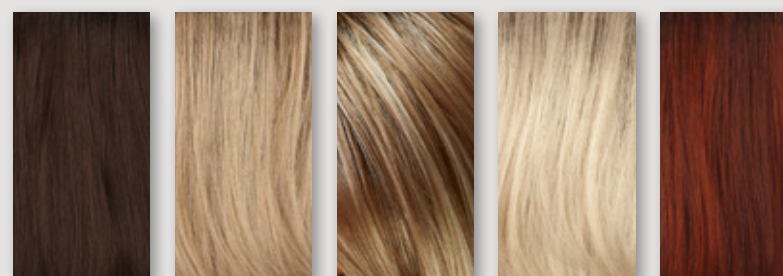


24H18 14H 16H 26H 614H 88H 27AH 27/26H 2400H 130H 30H 33H

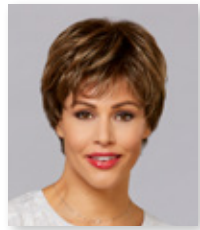


131H 37 38H 43 44H 51H 56 60H

Gradient colors



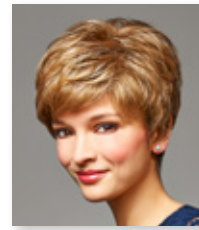
4GR 26GR 88GR 614GR 131GR



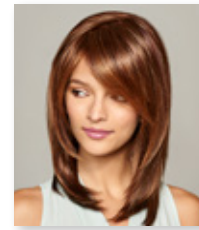
Amber 23



Amelia 18



Annette 15



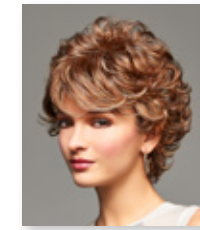
Athena-M/L 54



Audrey 10



Ava-M/L 55



Bailey 10



Becky-M 42



Jessica 5



Jules-L 29



Kayla 16



Kelly-PA/M 43



Kendall-M/L 52



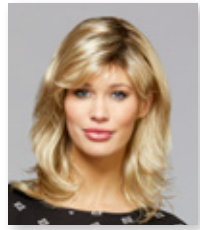
Long Hat 64



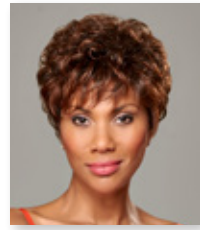
Lori-PA/M/L 58



Lucy 18



Bethany 20



Bonnie-PA/L 28



Breezy 65



Brenda-P 24



Brooklyn-PA/MP/L 32



Celine 35



Charlotte-M/L 46



Charm 65



Madilyn-PA/M/L 41



Marnie 12



Monica-PA/M/L 50



Mystique-PA/H/M/L 60



Nikki 14



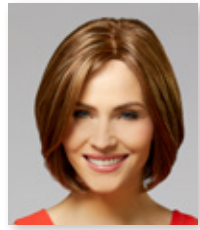
Nora-H/M/L 58



Paige 21



Peyton-M/L 57



Chic-H/M/L 61



Chloe 13



Classic Band 65



Classic Hat 64



Curly Hat 64



Danielle 4



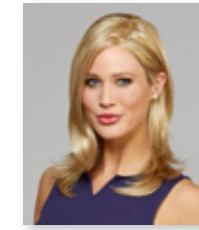
Delilah 26



Dylan-L 31



Piper-P 22



Presley-MP/L 33



Rachel-M/L 44



Ruby-PA 18



Sabrina-P/M 50



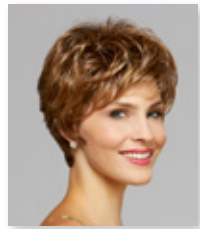
Sassy 65



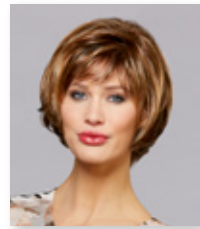
Savannah 26



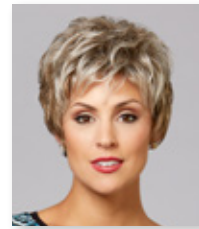
Scarlet-M/L 56



Elena 8



Ella 10



Emily 6



Faith-P 34



Farrah-M/L 53



Felicia 9



Fiona-M/L 48



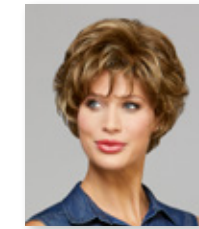
Gabby 17



Shorty Hat 64



Skylar-PA/M/L 62



Stella-M 46



Taylor-M/L 40



Temptation 65



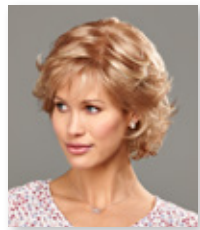
Tiffany-L 36



Trish-PA/M/L 58



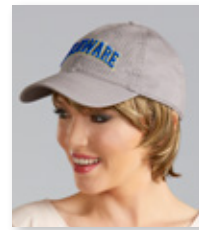
Vanity 26



Gianna-M/L 50



Grace-PA/M/L 49



Halo 66



Harper-L 30



Hayden-M/L 45



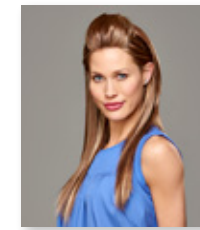
Holly 7



Isabelle-L 37



Jayde 25



Violet-H/M/L 62



Visage-H/M 62



Whirlwind 65



Zoey-M/L 46

H - Hand-knotted
L - Lace Front
M - Monofilament top
MP - Monofilament part
P - Petite headsizes
PA - Petite Average headsizes

